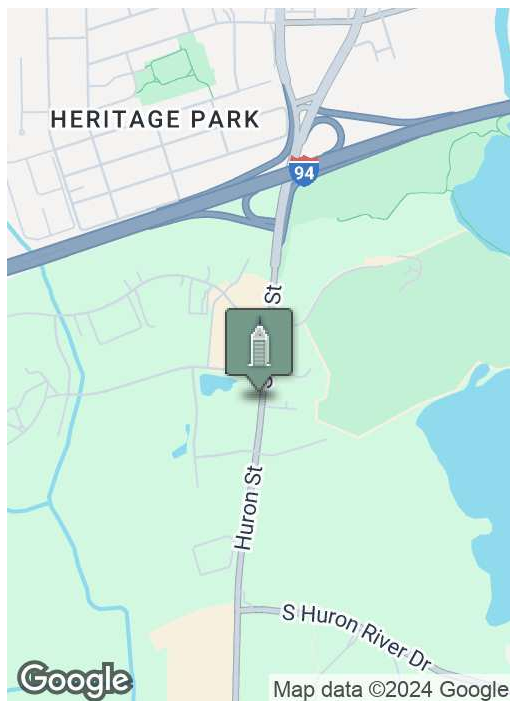
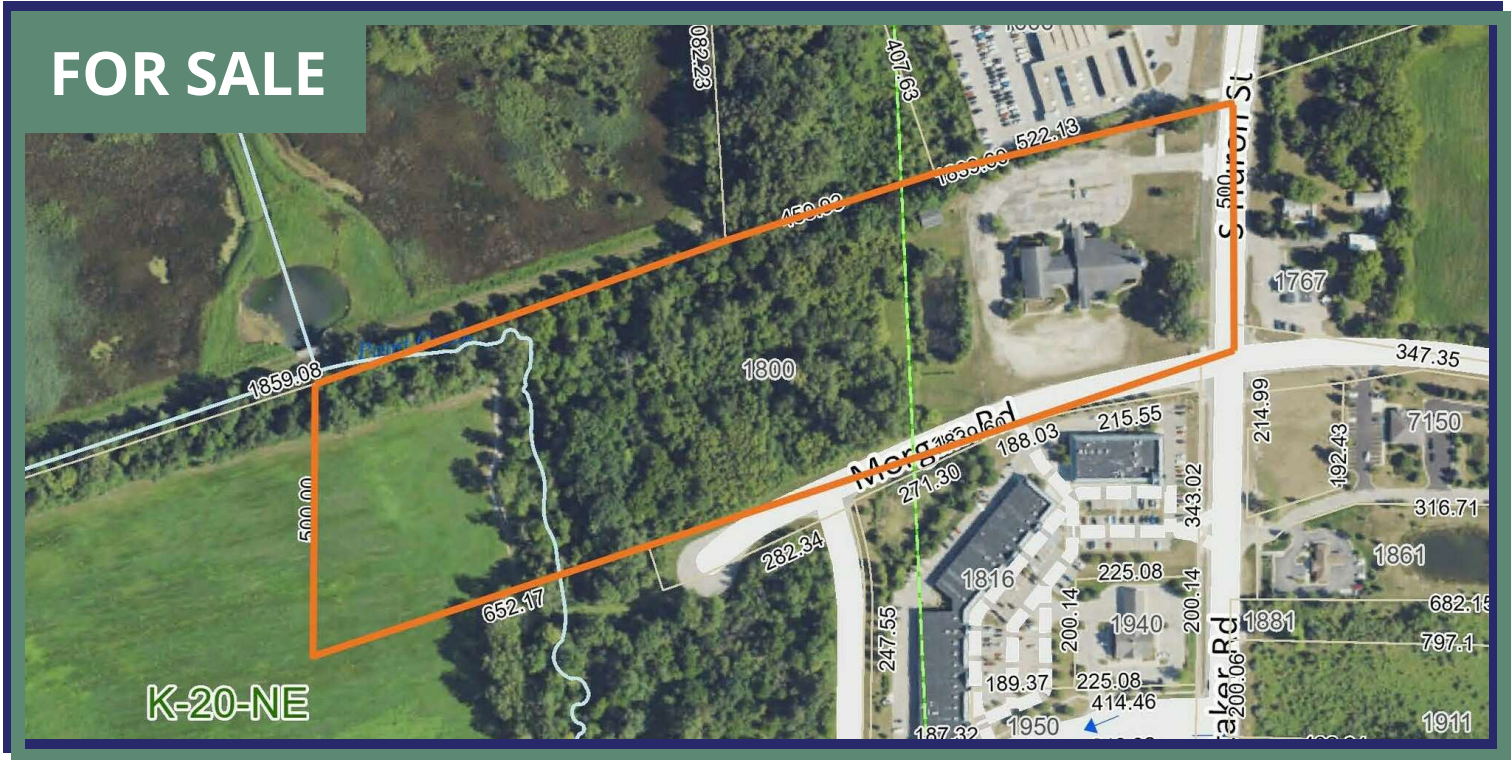


20 Acres - Prime Redevelopment - Lighted Corner

1800 S HURON ST, YPSILANTI, MI 48197



SUMMARY

Sale Price:	\$3,000,000
Lot Size:	20.0 Acres
Zoning:	TC (Town Center)
APN:	K-11-20-100-005

PROPERTY HIGHLIGHTS

- Prime corner location for maximum visibility/exposure
- Potential for mixed-use development
- Proximity to major transportation hubs and amenities
- Favorable investment opportunity in a growing market
- Infrastructure-ready for efficient development process
- Flexible zoning regulations for diverse business ventures

Building relationships.

208 East Washington Street Ann Arbor, MI 48104

734.663.0501

Charlie Koenn

734.926.0230

CKOENN@SWISHERCOMMERCIAL.COM

SWISHERCOMMERCIAL.COM

20 Acres - Prime Redevelopment for Sale

1800 S HURON ST, YPSILANTI, MI 48197



PROPERTY DESCRIPTION

This 20-acre property on the lighted intersection of S. Huron and Morgan Roads offers endless opportunities with a 50,000-square-foot church building, perfectly suited for redevelopment or adaptive reuse.

Zoned TC (Town Center), the site is primed for a wide range of uses, from commercial to community-focused ventures. With an impressive 460 feet of road frontage on S. Huron and 1,000 feet of frontage on Morgan, the property boasts excellent visibility and accessibility in a highly sought-after location.

This is a rare chance to secure a large, versatile parcel in Ypsilanti's growing market.

LOCATION DESCRIPTION

Located on high-traffic South Huron Street, just minutes from downtown Ypsilanti. Conveniently positioned with easy access to I-94 via Huron Street or US-12/Michigan Avenue.

***Building
relationships.***

208 East Washington Street Ann Arbor, MI 48104

734.663.0501

Charlie Koenn

734.926.0230

CKOENN@SWISHERCOMMERCIAL.COM

SWISHERCOMMERCIAL.COM

20 Acres - Prime Redevelopment for Sale

1800 S HURON ST, YPSILANTI, MI 48197



***Building
relationships.***

208 East Washington Street Ann Arbor, MI 48104

734.663.0501

Charlie Koenn

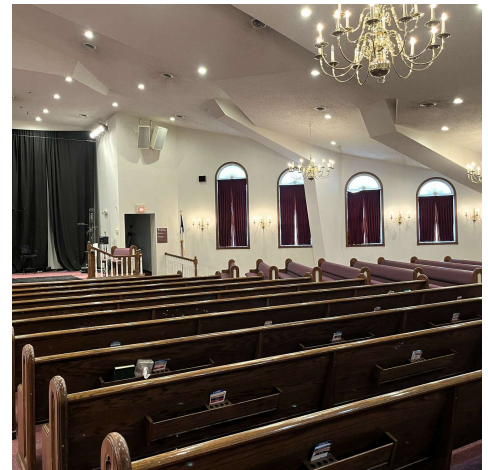
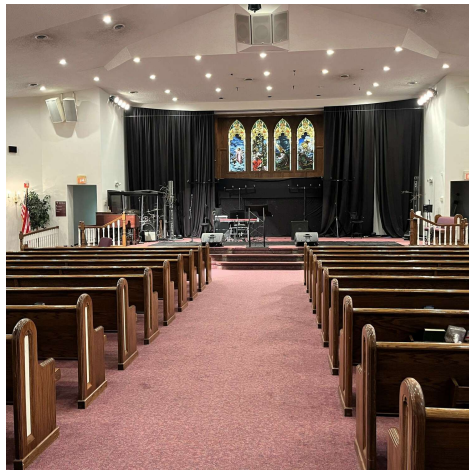
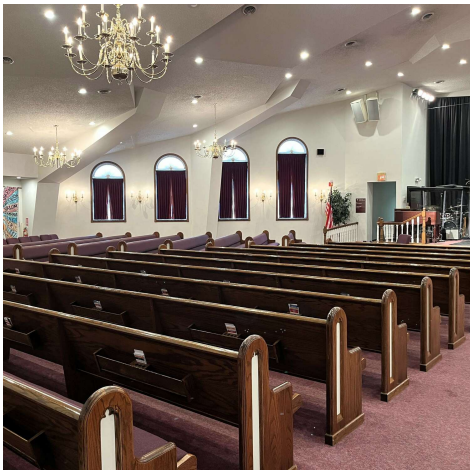
734.926.0230

CKOENN@SWISHERCOMMERCIAL.COM

SWISHERCOMMERCIAL.COM

20 Acres - Prime Redevelopment for Sale

1800 S HURON ST, YPSILANTI, MI 48197



Building relationships.

208 East Washington Street Ann Arbor, MI 48104

734.663.0501

Charlie Koenn

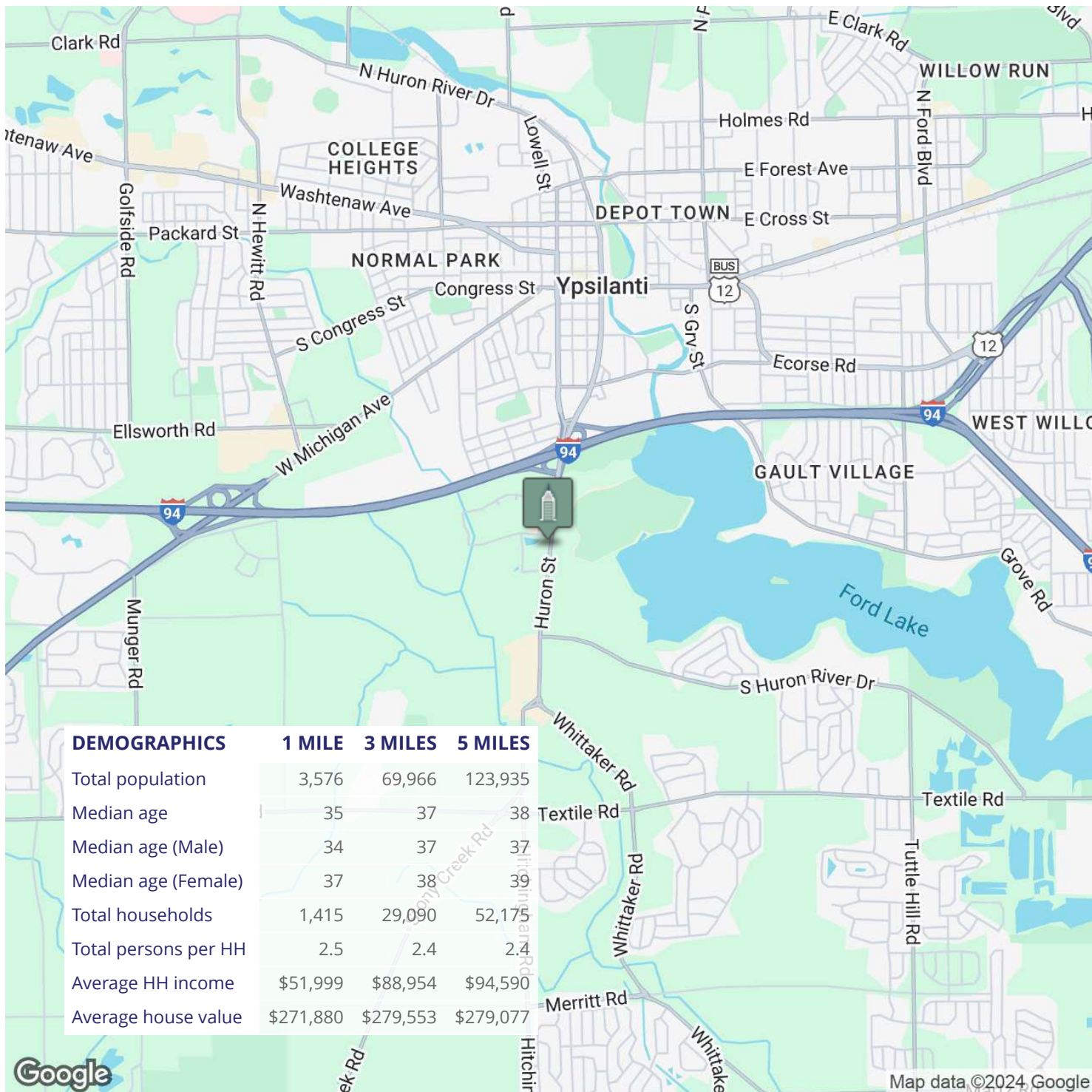
734.926.0230

CKOENN@SWISHERCOMMERCIAL.COM

SWISHERCOMMERCIAL.COM

20 Acres - Prime Redevelopment for Sale

1800 S HURON ST, YPSILANTI, MI 48197



Building relationships.

208 East Washington Street Ann Arbor, MI 48104

734.663.0501

Charlie Koenn

734.926.0230

CKOENN@SWISHERCOMMERCIAL.COM

SWISHERCOMMERCIAL.COM