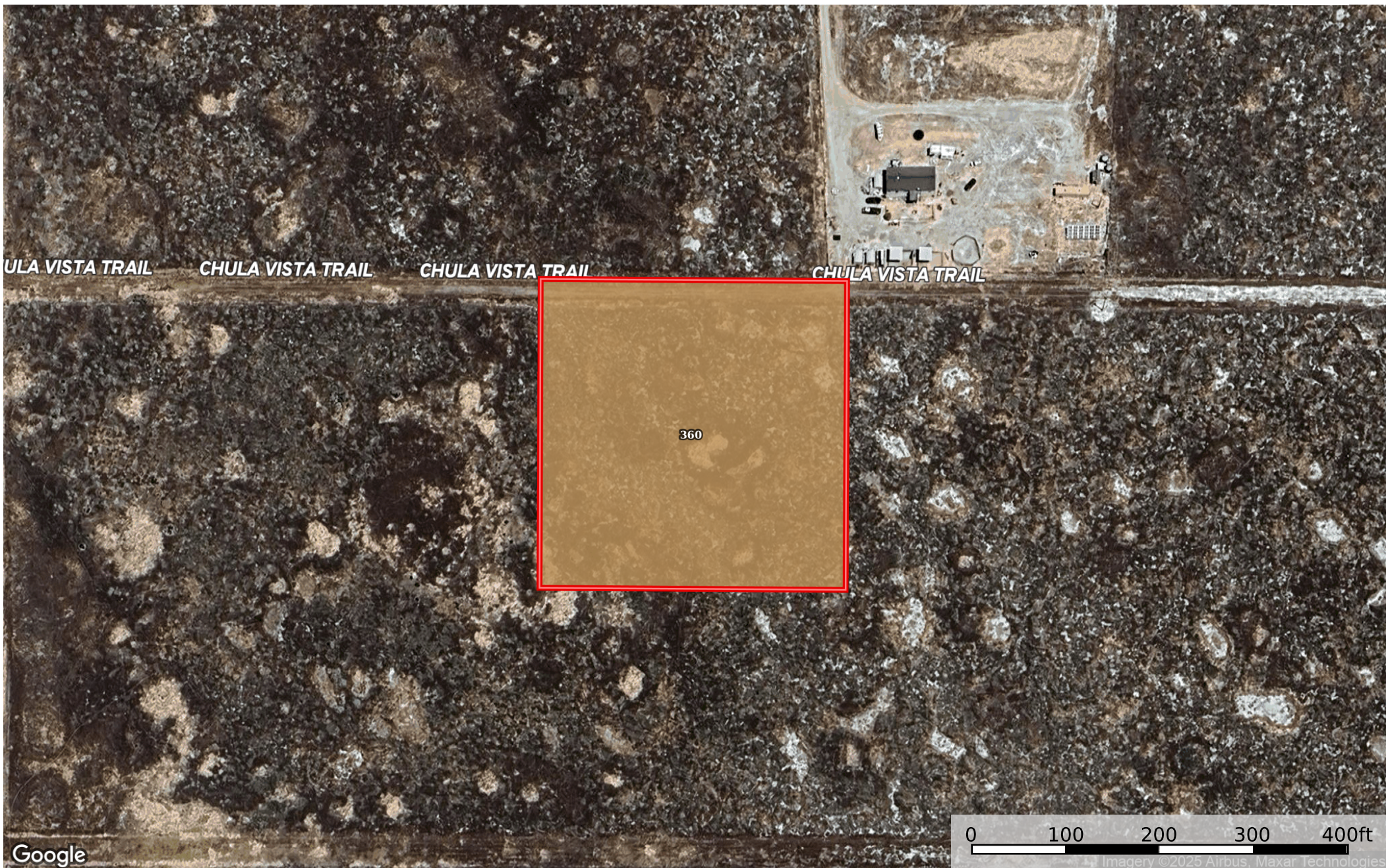


2.50 Acres Santa Margarita, San Luis Obispo County, CA  
San Luis Obispo County, California, 2.5 AC +/-



 Boundary

Boundary 2.45 ac

| SOIL CODE | SOIL DESCRIPTION                       | ACRES   | %    | CPI | NCCPI | CAP |
|-----------|--|---------|------|-----|-------|-----|
| 360       | Chicote complex, 0 to 2 percent slopes | 2.45    | 100  | 0   | 1     | 6s  |
| TOTALS    |  | 2.45(*) | 100% | -   | 1.0   | 6   |

(\*) Total acres may differ in the second decimal compared to the sum of each acreage soil. This is due to a round error because we only show the acres of each soil with two decimal.

