



5 acres in beautiful Colorado!
\$287 down payment \$187/month

PROPERTY DETAILS

37.3431, -105.3816

- APN: 702101000
- Size, Acres
- GPS Coordinates
- County, State
- Zoning:
- HOA Fees

CLIMATE



Summer High:

The July high is around 92 degrees



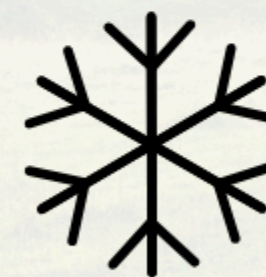
Winter Low:

The January low is 30



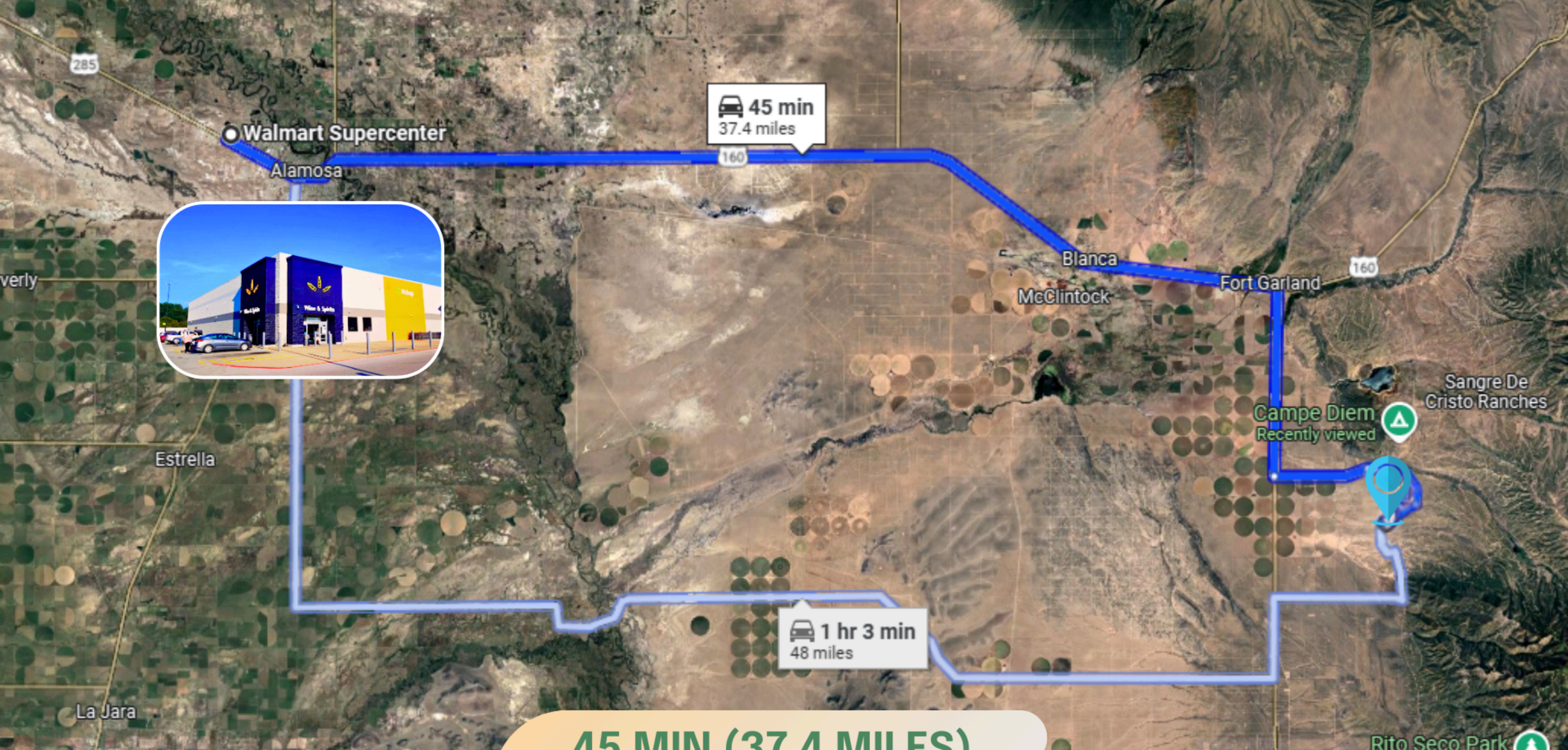
Rain:

Averages 54 inches of rain a year



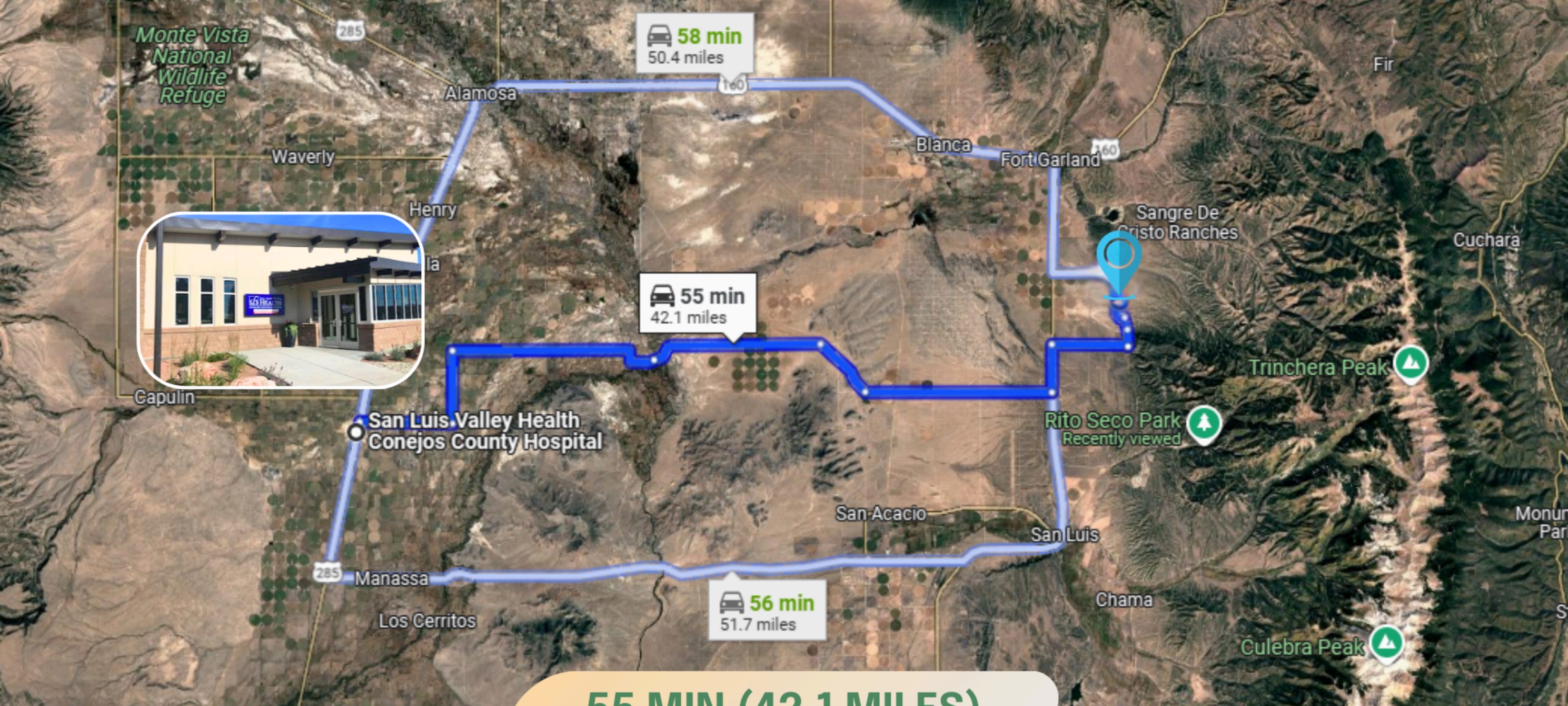
Snow:

Averages 4 inches of snow a year



45 MIN (37.4 MILES)

THIS PROPERTY IS 45 MIN (37.4 MILES) TO WALMART SUPERCENTER IN ALAMOSA, CO.



55 MIN (42.1 MILES)

**THIS PROPERTY IS 55 MIN (42.1 MILES) TO SAN LUIS VALLEY HEALTH CONEJOS COUNTY HOSPITAL
IN LA JARA, CO.**



40 MIN (36 MILES)

THIS PROPERTY IS 40 MIN (36 MILES) TO GREAT SAND DUNES NATIONAL PARK AND PRESERVE IN DUNCAN, CO.

NEARBY AIRPORTS



Denver International Airport



LIFETIME LAND USA

5-ACRE IN COLORADO

Costilla County

OPTION A:

Discounted Cash Price

\$10,995

OPTION B:

Owner Financing

**\$187/month
for 72 months!**



CONTACT NO: 682-382-9719

SALES@LIFETIMELANDUSA.COM

WWW.LIFETIMELANDUSA.COM

A photograph of two men shaking hands in a field at sunset. The man on the left is wearing a light-colored vest over a blue shirt and has a backpack. The man on the right is wearing a plaid shirt over a white t-shirt, glasses, and a watch, and is holding a tablet. The background is a field of yellow flowers under a warm, golden sky.

We pride ourselves in making sure the process is **simple, quick** and **stress-free** for you!

We offer **easy financing** as well as a **discounted cash price!**





VISIT US FOR MORE PROPERTY LISTINGS

Q <https://lifetimelandusa.com>



YOU MAY ALSO REACH US AT:

 682-382-9719

 sales@lifetimelandusa.com

 Lifetime Land USA

 lifetimeland_usa

*Our mission is to
turn your dream
of becoming a
landowner into
a reality.*