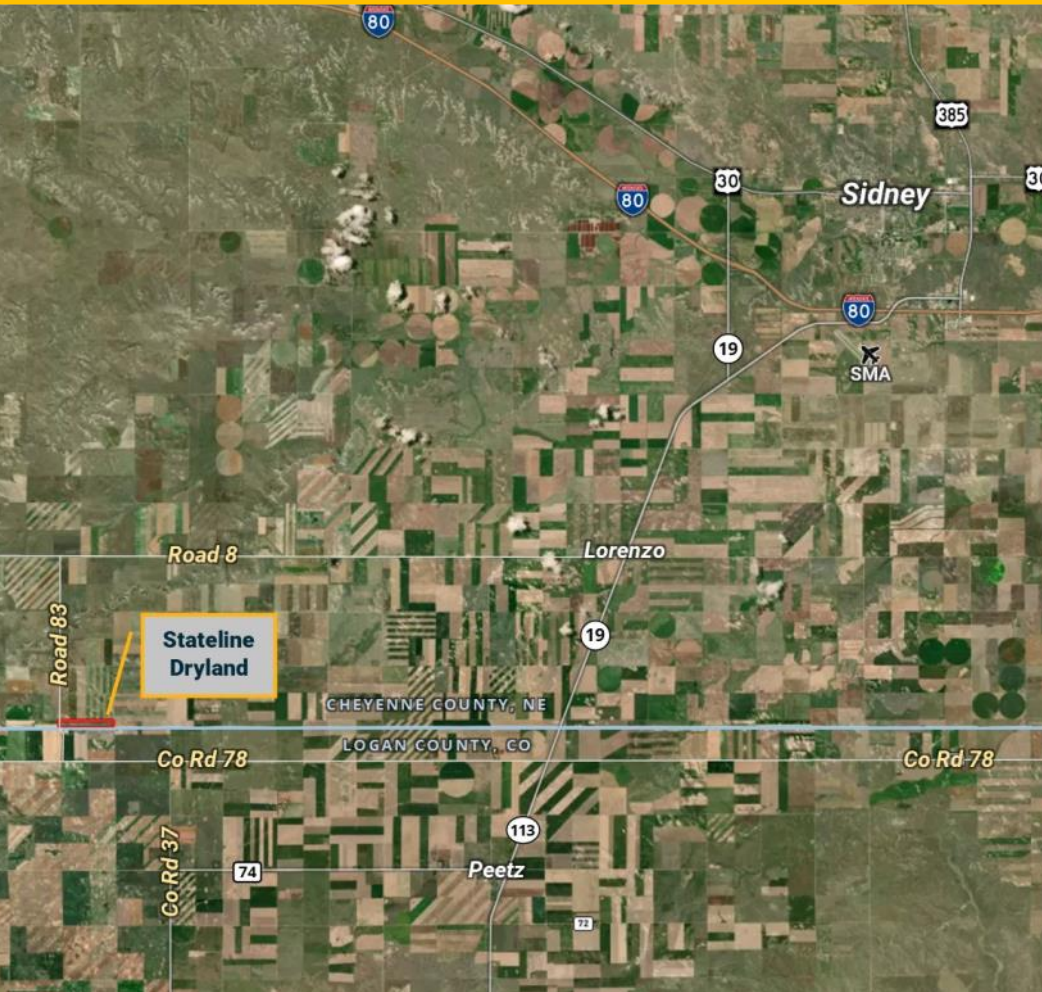


# STATELINE DRYLAND

85± ACRES | CHEYENNE COUNTY, NE

NEW LISTING



## OVERVIEW:

Farmed organic for past two seasons, this dryland parcel is currently in cornstalks and available for 2025 growing season.

## QUICK FACTS:

- 85± total acres (FSA)
- 84.5± tillable acres
- Located 8.5± mi W of NE Hwy 19
- Cheyenne County, NE
- Accessible via Road 83 (west)
- Farmed organic for the past 2 seasons
- Possession upon closing
- R/E Taxes: \$591
- Legal: Lots 1-4, Section 21, T12N-R52W
- Seller to convey all OWNED mineral rights

Asking Price \$110,000



## NOTICE TO PROSPECTIVE BUYERS

The information contained herein has either been given to us by the owner of the property or obtained from sources that we deem reliable. We have no reason to doubt its accuracy, but we do not guarantee it. Reck Agri Realty & Auction and the Seller assumes no responsibility for the omissions, corrections, or withdrawals.

The location and aerial maps are not intended as a survey and are for general location purposes only. The prospective Buyer(s) should verify all information contained herein. All prospective buyers are urged to fully inspect the property, its condition and to rely on their own conclusions. All equipment and improvements are to be sold AS IS-WHERE IS, without warranty, representation, or recourse to Seller.

Office: 970.522.7770 | Toll Free: 800.748.2589 | [reckagri.com](https://reckagri.com)



For More Information, Contact:

Ben Gardiner, Broker Associate  
[bgardiner@reckagri.com](mailto:bgardiner@reckagri.com)

Marc Reck, Broker  
[marcreck@reckagri.com](mailto:marcreck@reckagri.com)

## The proof is in the numbers.

We connect buyers and sellers of ag real estate like no one else can - and we have the reputation and relationships to prove it.

**927,540**

total acres sold

**427**

successful auctions

**18,607**

auction attendees

**2,010**

transactions

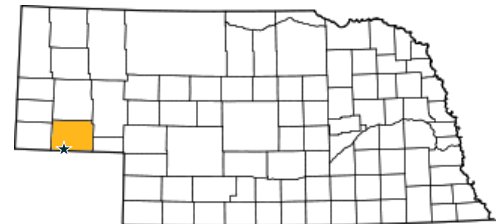


# Stateline Dryland

85± Total Acres  
Asking \$110,000

**NEW LISTING**

CHEYENNE COUNTY, NE



Organic dryland located along the NE/CO state line. Currently in cornstalks—available for 2025.

SCAN THE QR FOR  
PHOTOS, SOILS,  
MAPS & MORE!

