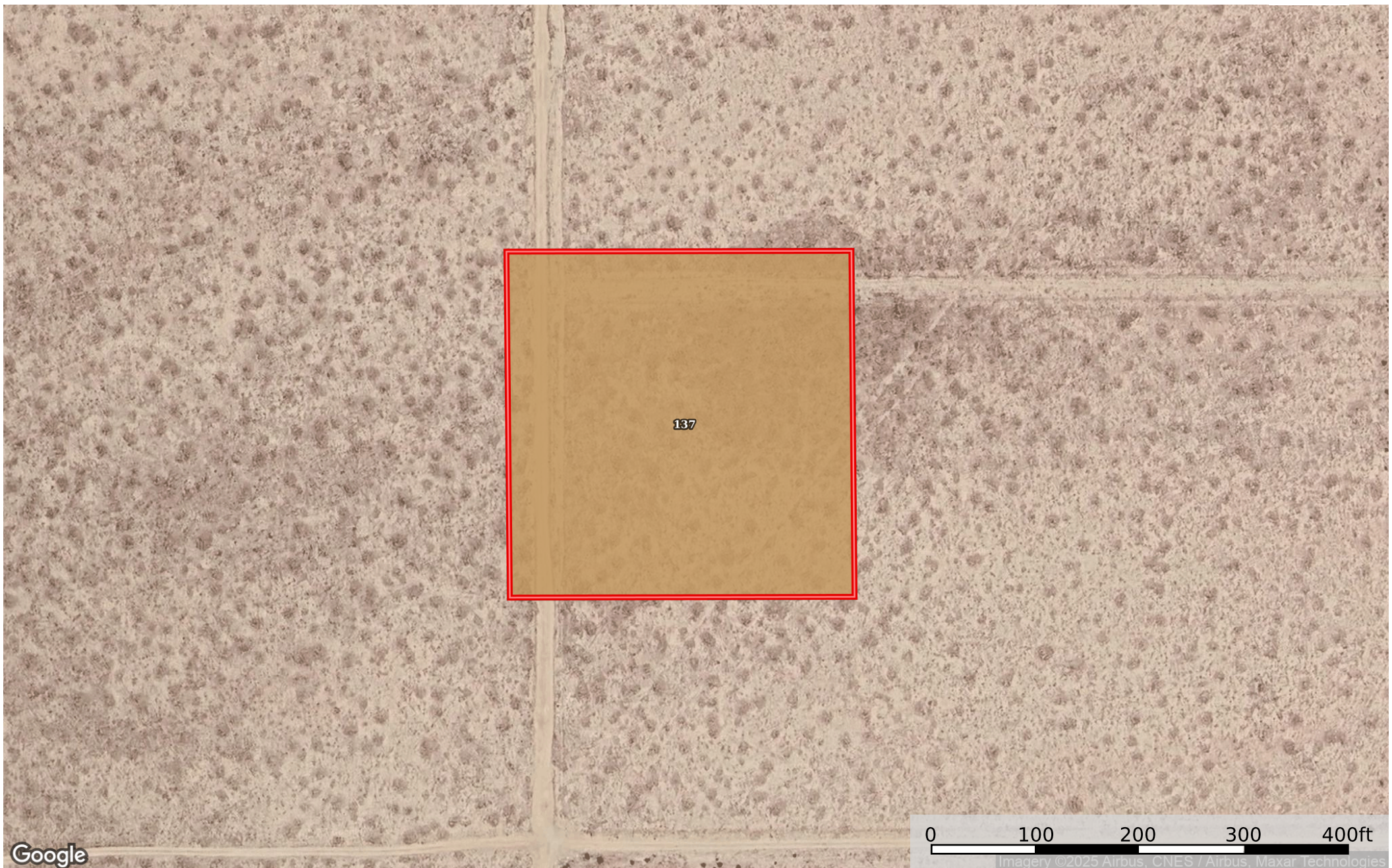
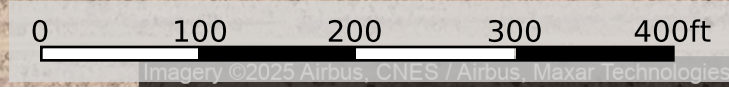


2.52 Acres California City, Kern County, CA 206-070-17-
Kern County, California, 2.52 AC +/-



Google



 Boundary

Boundary 2.52 ac

SOIL CODE	SOIL DESCRIPTION	ACRES	%	CPI	NCCPI	CAP
137	Garlock loamy sand, 2 to 9 percent slopes	2.52	100	0	6	7e
TOTALS		2.52(*)	100%	-	6.0	7

(*) Total acres may differ in the second decimal compared to the sum of each acreage soil. This is due to a round error because we only show the acres of each soil with two decimal.

