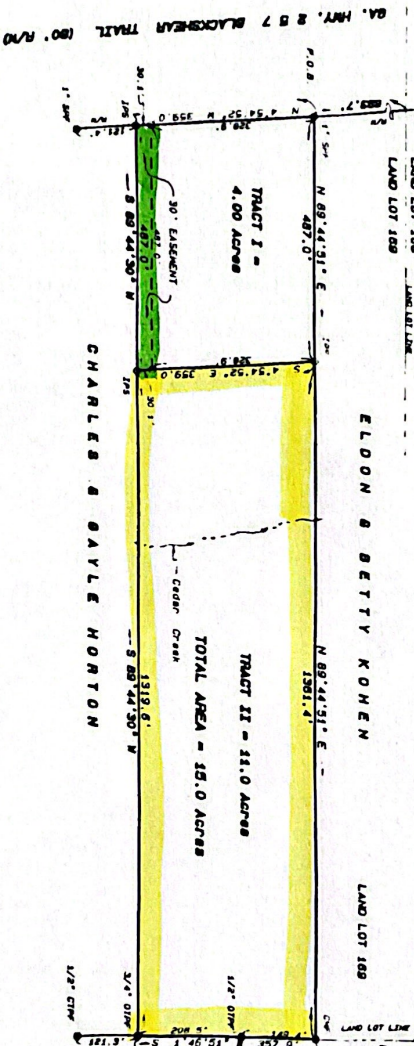


WILLIAM F. FAIRCLOTH and DONNA T. FAIRCLOTH



Correction

THIS FIELD DATA UPON WHICH THIS PLAT IS BASED WAS OBTAINED BY USING THE ANSON TRANSMIT METHOD. THIS PLAT HAS BEEN CALCULATED FOR CLOSURE AND IS FOUND TO BE ACCURATE WITHIN ONE FOOT IN EACH 100 FEET. THE LINEAR AND ANGULAR MEASUREMENTS SHOWN ON THIS PLAT WERE OBTAINED BY USING A TOPCON ELECTRIC TOTAL STATION.

IN MY OPINION THIS PLAT IS A CORRECT REPRESENTATION OF THE LAND PLATTED AND HAS BEEN PREPARED IN ACCORDANCE WITH THE MINIMUM STANDARDS AND REGULATIONS BY GEORGIA LAW. I AM A LICENSED SURVEYOR AND A MEMBER OF THE SURVEYING SOCIETY OF GEORGIA.

IN MY OPINION TRACT I IS NOT IN A DESIGNATED FLOOD PLAIN AREA.

Legend
P.D.E. POINT OF BEGINNING
S.M. STEEL PILE FOUND
L.S. LIMB OF STEEL PILE FOUND
D.M. DIMENSIONED DISTANCE SET
D.C. DIMENSIONED CURVE SET
O.D.M. OPEN TOP PILE FOUND
C.P.V. CURVE TOP PILE FOUND



PROPERTY SURVEY FOR
WILLIAM F. FAIRCLOTH & DONNA T. FAIRCLOTH
IN LAND LOT 168 7TH LAND DISTRICT
FALLOUT COUNTY, GEORGIA
FEBRUARY 2, 1993 SCALE 1" = 200'
LULLIS-PIREST AND CO.
CONSULTING ENGINEERS & SURVEYORS
NANKIVILLE, GEORGIA 31028
PROJECT NO. 93 - 378
(912) 753-1501

Filed and docketed March 4, 1993 Woodson & ...