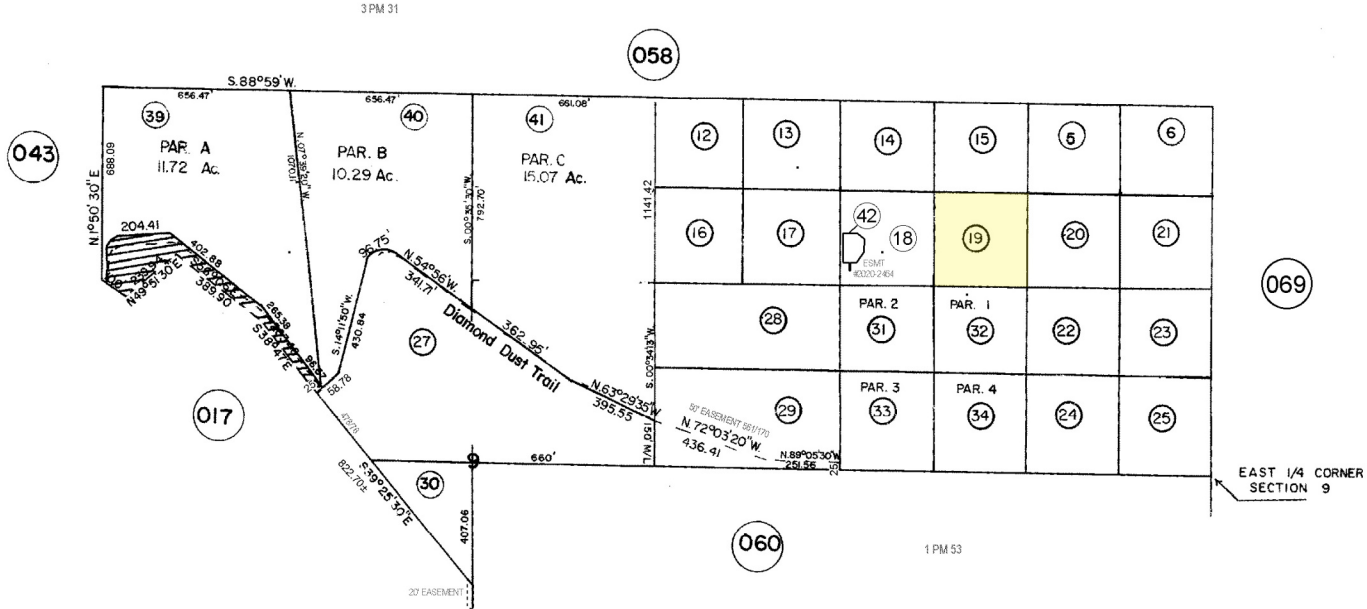
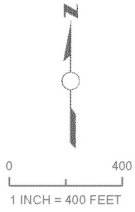


S 1/2 OF NE 1/4, POR. SE 1/4 OF NW 1/4
 AND POR. NE 1/4 OF SW 1/4
 SEC. 9, T 12 N, R 8 W, MDBM

TAX RATE AREA
 56-035

011-059



REVISIONS
 EASEMENT #2020002464, 2/27/2020, RL

THIS MAP WAS PREPARED FOR
 ASSESSMENT PURPOSES ONLY.
 NO LIABILITY IS ASSUMED FOR
 THE ACCURACY OF THE DATA
 DELINEATED HEREON.

RICHARD A. FORD
 ASSESSOR-RECORDER
 LAKE COUNTY, CALIFORNIA

3 PM 31
 1 PM 53
 4 RS 44