



**0.32 acre in Florida!**

**\$237 down payment    \$237/month**



## PROPERTY DETAILS

29.649651, -81.840510

- **APN: 06-10-25-4081-0380-0130**
- **Size, Acres: 0.32**
- **GPS Coordinates: 29.649651, -81.840510**
- **County, State: Putnam County, Florida**
- **Zoning: R2 - Residential**
- **HOA Fees: No HOA**



# CLIMATE



## Summer High:

The July high is around 91 degrees



## Winter Low:

The January low is 45



## Rain:

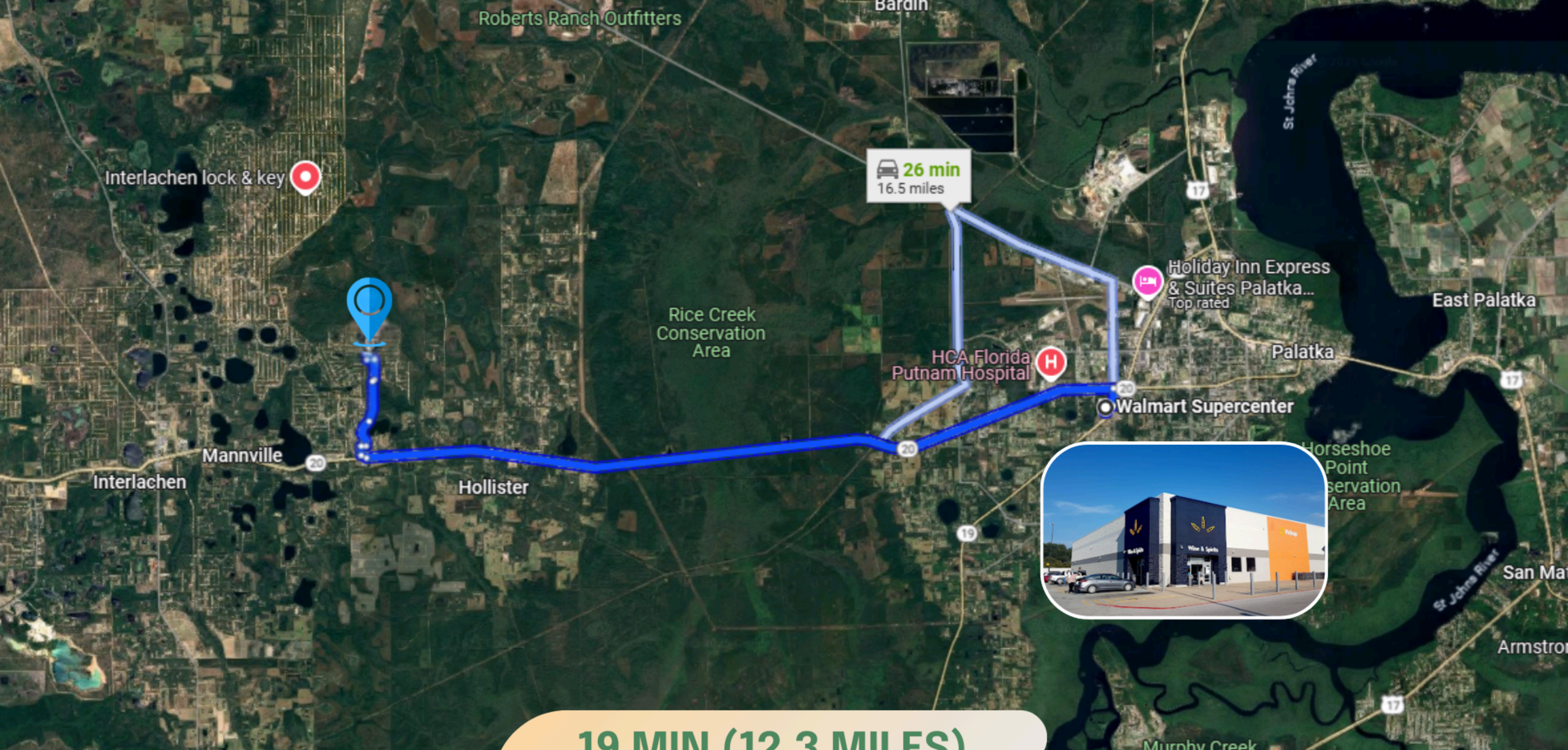
Averages 51 inches of rain a year



## Snow:

Averages 0 inches of snow a year

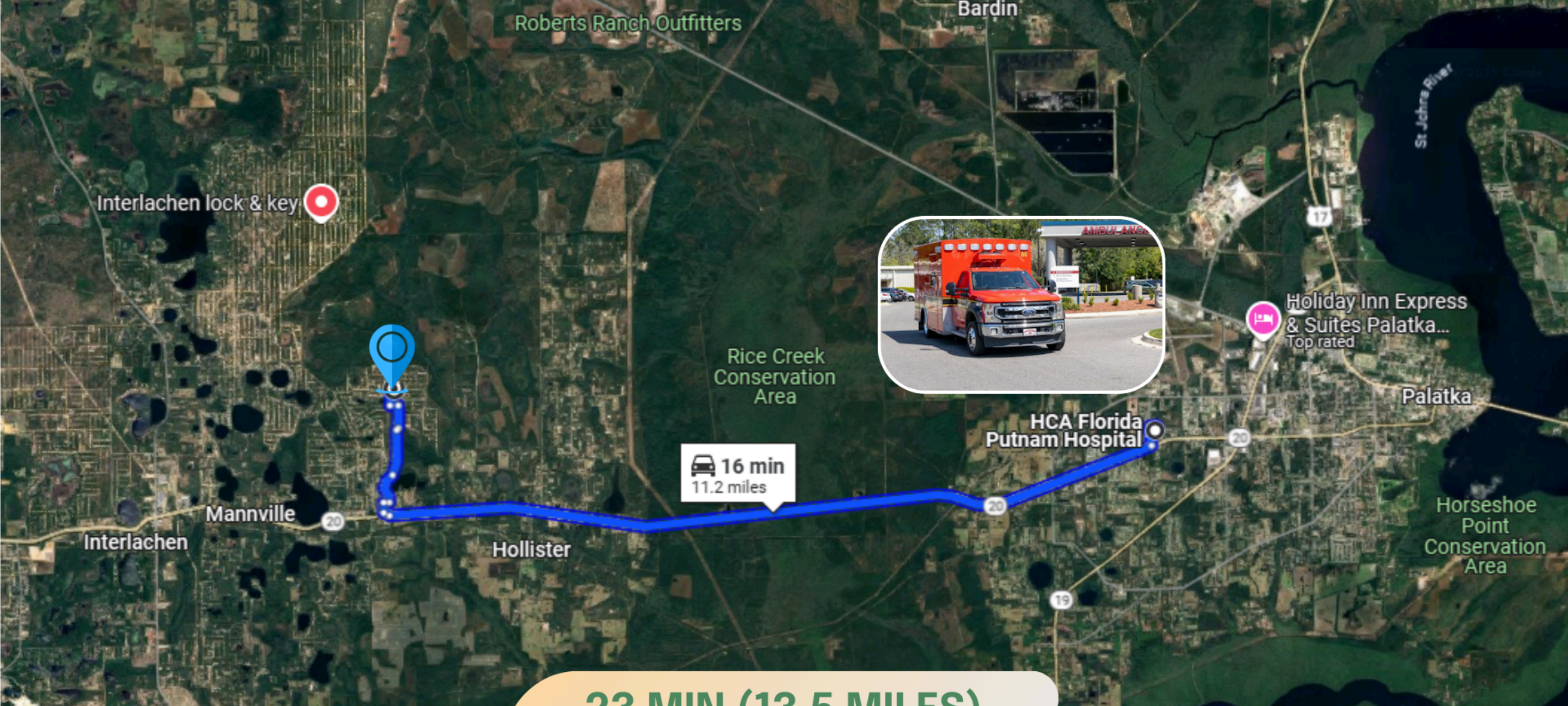




**19 MIN (12.3 MILES)**

**THIS PROPERTY IS 19 MIN (12.3 MILES) TO WALMART SUPERCENTER IN PALATKA, FL.**

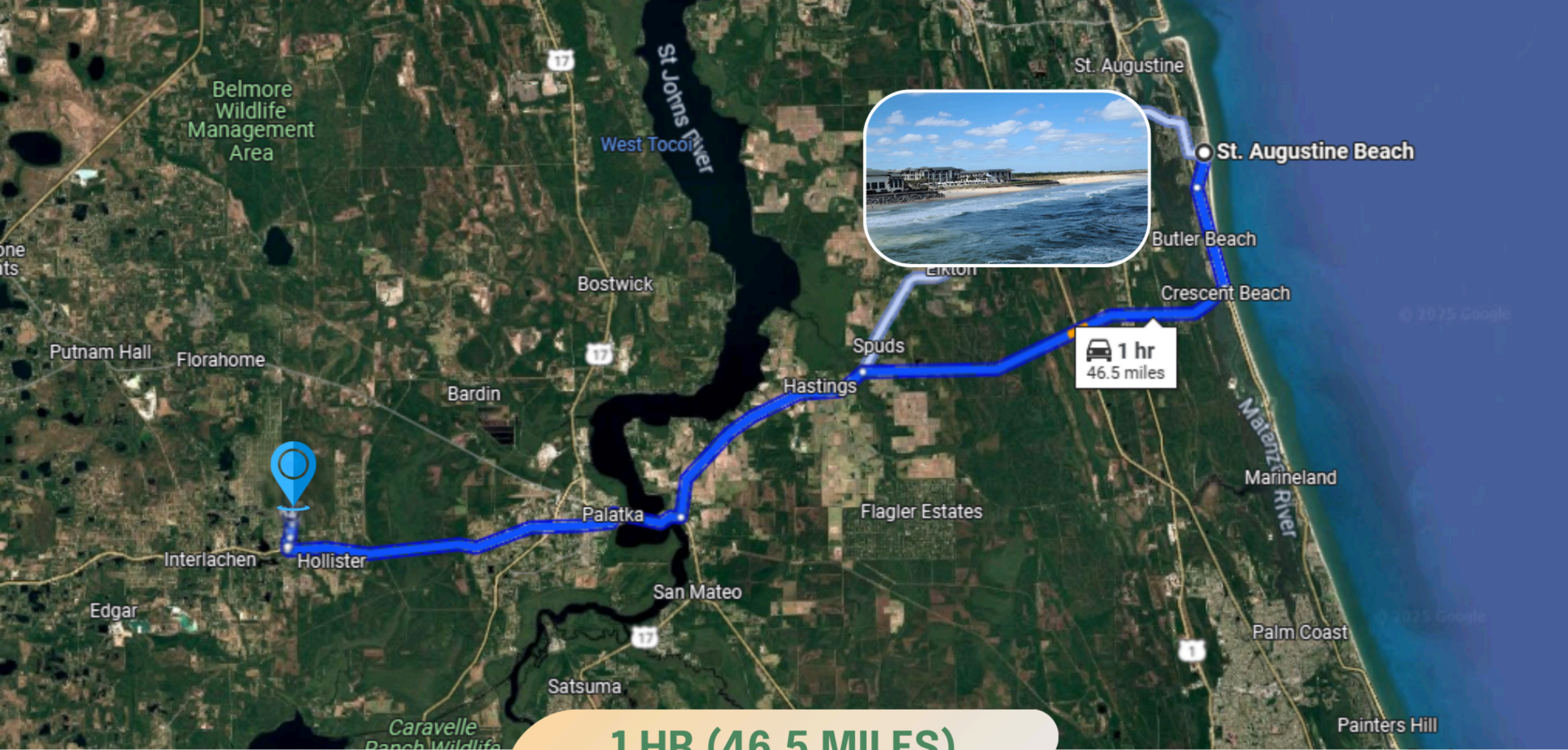




**23 MIN (13.5 MILES)**

**THIS PROPERTY IS 23 MIN (13.5 MILES) TO HCA FLORIDA PUTNAM HOSPITAL EMERGENCY ROOM IN PALATKA, FL.**





**1 HR (46.5 MILES)**

**THIS PROPERTY IS 1 HR (46.5 MILES) TO ST AUGUSTINE BEACH ON ANASTASIA ISLAND.**



# NEARBY AIRPORTS



**Daytona Beach International Airport**



**Jacksonville International Airport**



# NEARBY LAKES



**Lake Broward**



**Stella Lake**



**Crescent Lake**



A photograph of two men shaking hands in a field at sunset. The man on the left is wearing a light-colored vest over a blue shirt and has a backpack. The man on the right is wearing a plaid shirt over a white t-shirt, glasses, and a watch, and is holding a tablet. The background is a field of yellow flowers under a warm, golden sky.

We pride ourselves in making sure the process is **simple, quick** and **stress-free** for you!

We offer **easy financing** as well as a **discounted cash price!**







**VISIT US FOR MORE PROPERTY LISTINGS**

**Q** <https://lifetimelandusa.com>



**YOU MAY ALSO REACH US AT:**

 682-382-9719

 [sales@lifetimelandusa.com](mailto:sales@lifetimelandusa.com)

 Lifetime Land USA

 lifetimeland\_usa

*Our mission is to  
turn your dream  
of becoming a  
landowner into  
a reality.*