



4.44 acres in Colorado!

\$257 down payment \$157/month

PROPERTY DETAILS

 37.3291771, -105.3878572

- **APN: 70601460**
- **Size, Acres: 4.44**
- **GPS Coordinates: 37.3291771, -105.3878572**
- **County, State: Costilla County, Colorado**
- **Zoning: Estate Residential**
- **HOA Fees: No HOA**

CLIMATE



Summer High:

The July high is around 92 degrees



Winter Low:

The January low is 30



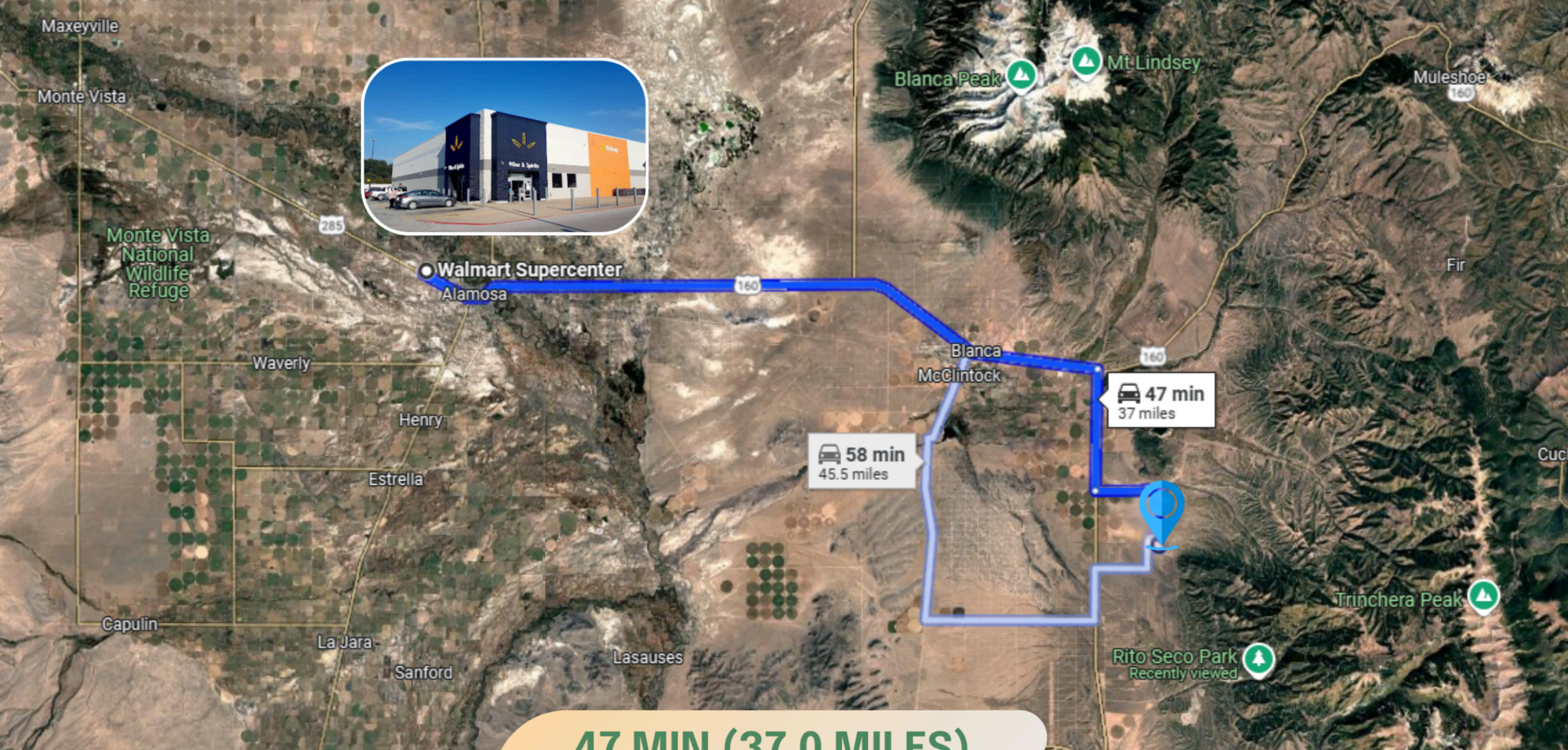
Rain:

Averages 54 inches of rain a year



Snow:

Averages 4 inches of snow a year



47 MIN (37.0 MILES)

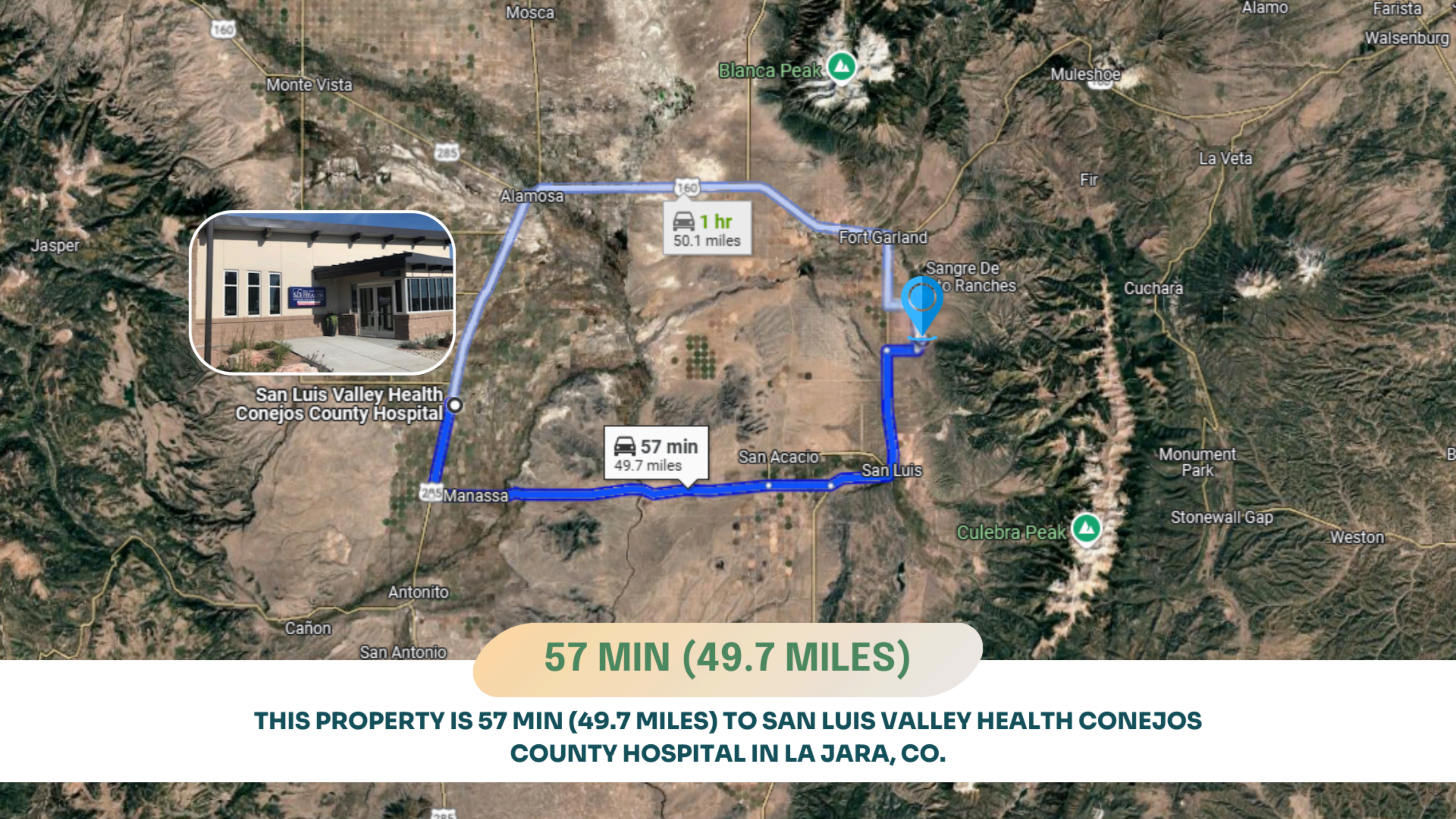
THIS PROPERTY IS 47 MIN (37.0 MILES) TO WALMART SUPERCENTER IN ALAMOSA, CO.

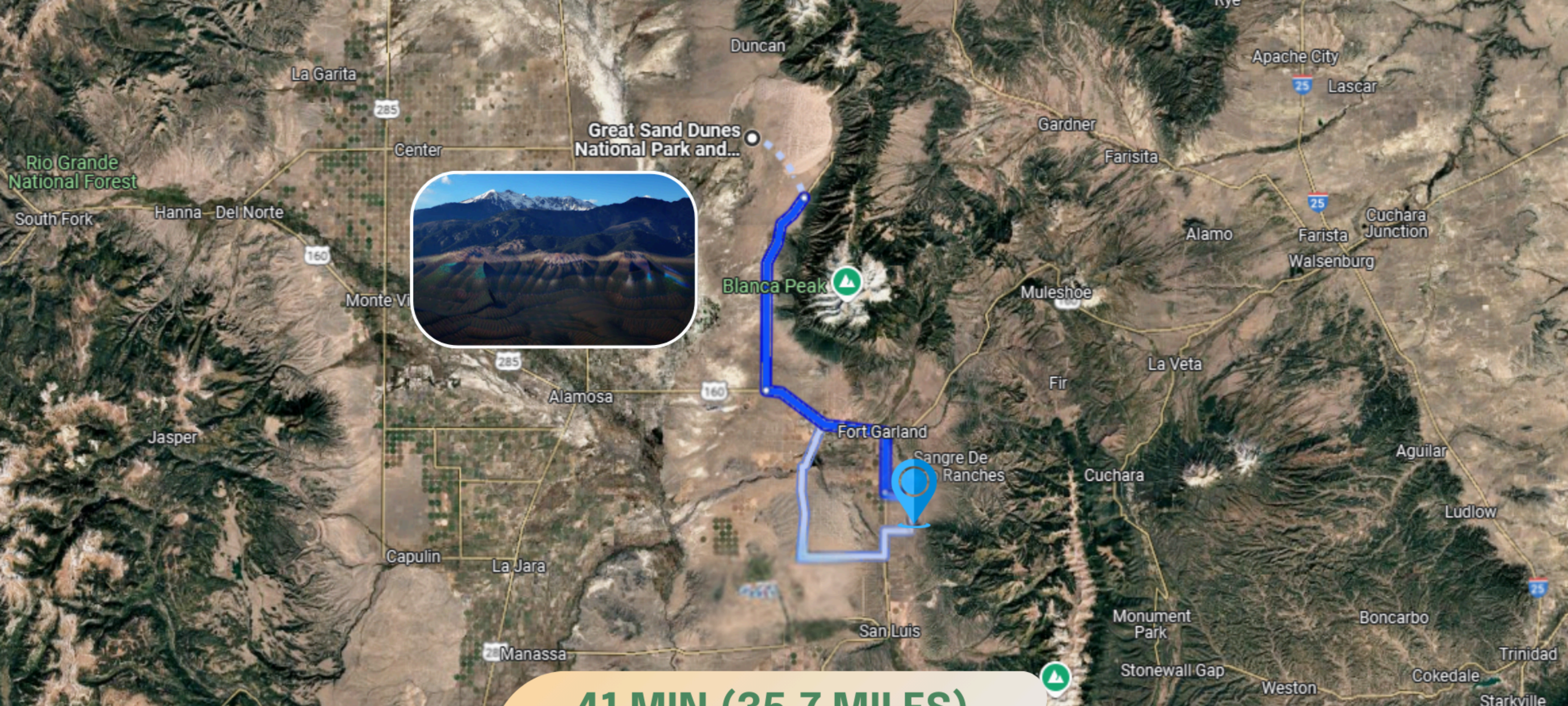


San Luis Valley Health
Conejos County Hospital

57 MIN (49.7 MILES)

THIS PROPERTY IS 57 MIN (49.7 MILES) TO SAN LUIS VALLEY HEALTH CONEJOS COUNTY HOSPITAL IN LA JARA, CO.





41 MIN (35.7 MILES)

THIS PROPERTY IS 41 MIN (35.7 MILES) TO GREAT SAND DUNES NATIONAL PARK AND PRESERVE IN DUNCAN, CO.

NEARBY AIRPORTS



Denver International Airport

A photograph of two men shaking hands in a field at sunset. The man on the left is wearing a light-colored vest over a blue shirt and has a backpack. The man on the right is wearing a plaid shirt over a white t-shirt, glasses, and a watch, and is holding a tablet. The background is a field of yellow flowers under a warm, golden sky.

We pride ourselves in making sure the process is **simple, quick** and **stress-free** for you!

We offer **easy financing** as well as a **discounted cash price!**





VISIT US FOR MORE PROPERTY LISTINGS

Q <https://lifetimelandusa.com>



YOU MAY ALSO REACH US AT:

 682-382-9719

 sales@lifetimelandusa.com

 Lifetime Land USA

 lifetimeland_usa

*Our mission is to
turn your dream
of becoming a
landowner into
a reality.*