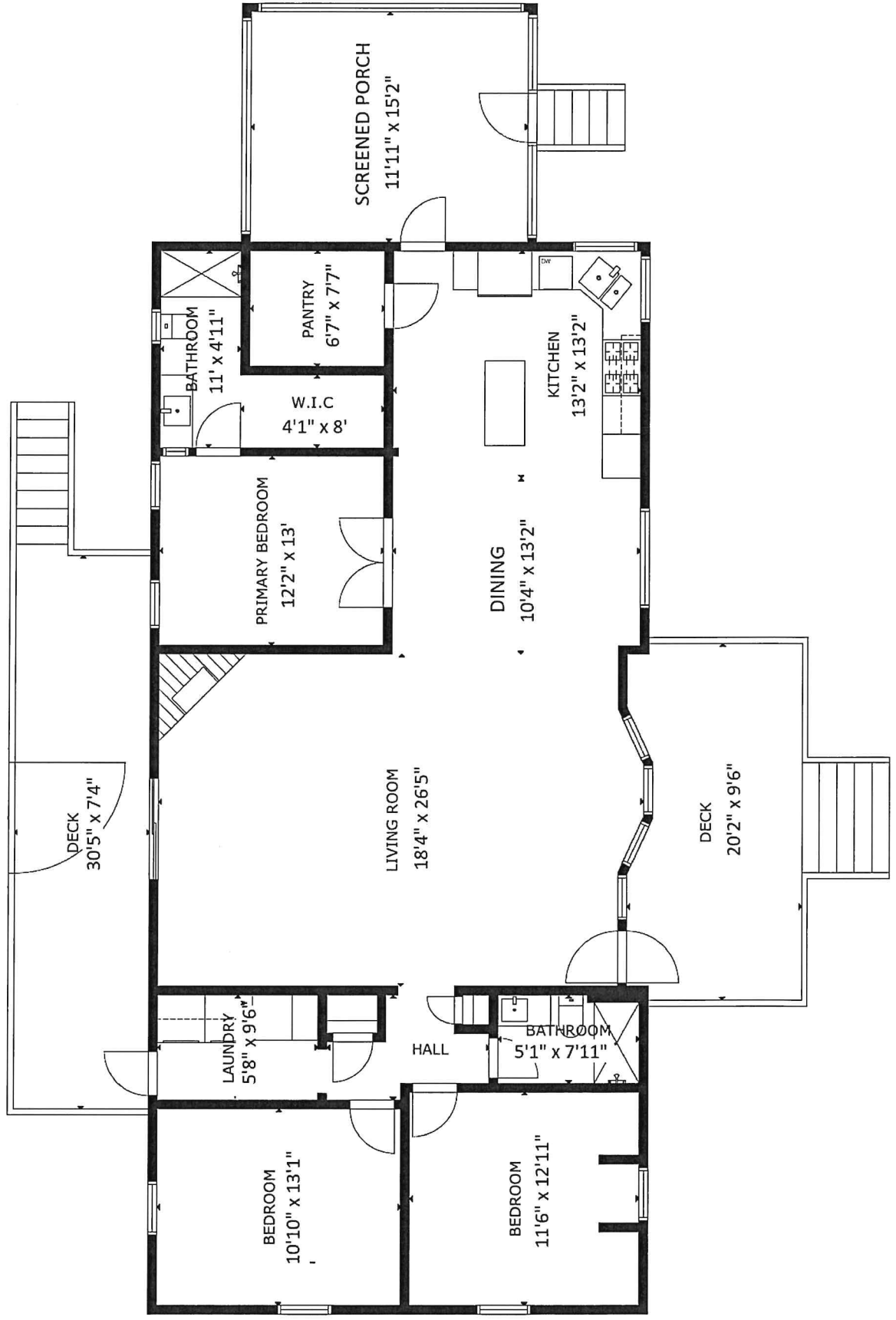


471 Deer Run Pittsboro, NC 27312



The following dimensions are approximate interior wall to wall dimensions, measured on site, from the widest portion of each room, then calculated to Feet/Inches from Rounded Decimal Feet. Information deemed reliable, but not guaranteed.

Room Dimension Summary	Address:	471 Deer Run Pittsboro, NC 27312							
	Prepared for	Eric Andrews	Measured by	Laura Fuelleman					

The following dimensions are approximate interior wall to wall dimensions, measured from the widest portion of each room.
 Exterior dimensions may be either are approximate inner or outer dimensions - tending to be less exact

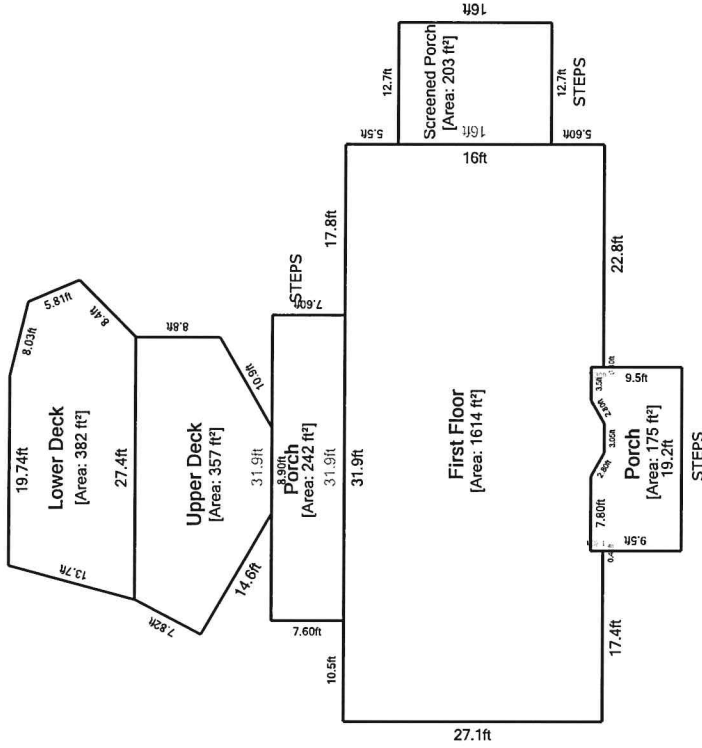
Information deemed reliable, but not guaranteed.

	Length in Feet -		Width in Feet -	Parallel to Front Facade		Perpendicular to Front Facade		
	Parallel to Front Facade	Decimal Feet		Parallel to Front Facade	Perpendicular to Front Facade			
Main Floor								
Living Room	18.3		26.4	18 ft	4 in	by	26 ft	5 in
Dining Room	10.3		13.2	10 ft	4 in	by	13 ft	2 in
Kitchen	13.2		13.2	13 ft	2 in	by	13 ft	2 in
Pantry	6.6		7.6	6 ft	7 in	by	7 ft	7 in
Primary Bedroom	12.2		13	12 ft	2 in	by	13 ft	0 in
Primary Bathroom	11		4.9	11 ft	0 in	by	4 ft	11 in
Walk in Closet	4.1		8	4 ft	1 in	by	8 ft	0 in
Bedroom - Front	11.5		12.9	11 ft	6 in	by	12 ft	11 in
Bathroom - Hall	5.1		7.9	5 ft	1 in	by	7 ft	11 in
Bedroom - Back	10.8		13.1	10 ft	10 in	by	13 ft	1 in
Laundry Room	5.7		9.5	5 ft	8 in	by	9 ft	6 in
Front Porch	20.2		9.5	20 ft	2 in	by	9 ft	6 in
Back Porch	30.4		7.3	30 ft	5 in	by	7 ft	4 in
Screened Porch	11.9		15.2	11 ft	11 in	by	15 ft	2 in
Upper Deck	31		9.4	31 ft	0 in	by	9 ft	5 in
Lower Deck	31.7		13.2	31 ft	8 in	by	13 ft	2 in

Outbuildings	Decimal Feet		Feet/Inches				
	Decimal Feet		Feet/Inches				
Storage Shed	16	10	16 ft	0 in	by	10 ft	0 in
Storage Shed Side Shelter	8.3	16	8 ft	4 in	by	16 ft	0 in
Workshop	18	35	18 ft	0 in	by	35 ft	0 in
Workshop Loft	15.6	15.6	15 ft	7 in	by	15 ft	7 in
Workshop Shelter	18.5	34.8	18 ft	6 in	by	34 ft	10 in

Sketch

Case Number: 20250303-1 File Number: 202503
 Address: 471 Deer Run
 City / State: Pittsboro / NC Zip / County: 27312 /
 Borrower:
 Lender or Client: Eric Andrews
 Prepared By: Laura Fuelleman



Living Area	
First Floor	203.20 ft²
Screened Porch	174.74 ft²
Porch	242.44 ft²
Upper Deck	357.19 ft²
Lower Deck	381.62 ft²
Total Living Area (rounded):	1359 ft²
Nonliving Area	
Screened Porch	1614.12 ft²
Porch	
Upper Deck	
Lower Deck	
Total Non-Living Area (rounded):	1614 ft²

This document is designed to be a record of total finished square feet to aid the listing agent in gathering the square feet facts of the property. Measurements are obtained by physical observation of the property by a certified Home Measurement Specialist. Within every measurement project, some degree of art of opinion may be applied as well as rounding as set forth in the standards. Final finished square footage will be rounded to the nearest whole number with the goal of being within a 5% margin of error. Information deemed reliable, but not guaranteed.

