



0.22 acre in Florida!

\$394 down payment \$194/month

PROPERTY DETAILS

- **APN: 07-10-25-4081-0590-0160**
- **Size, Acres: 0.22**
- **GPS Coordinates: 29.642892, -81.841860**
- **County, State: Putnam County, Florida**
- **Zoning: R-2 Residential**
- **HOA Fees: No HOA**

29.642892, -81.841860

CLIMATE



Summer High:

The July high is around 91 degrees



Winter Low:

The January low is 45



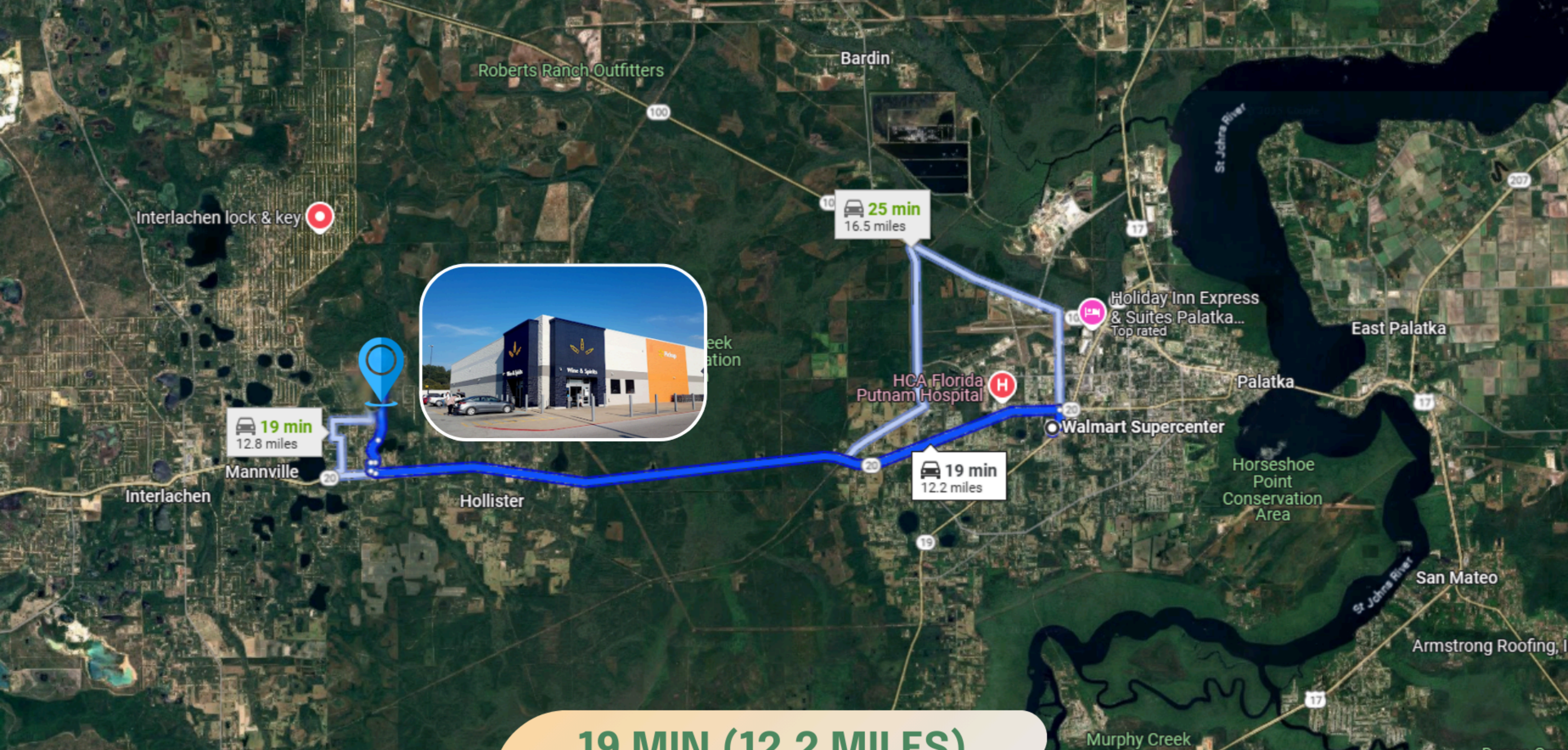
Rain:

Averages 51 inches of rain a year



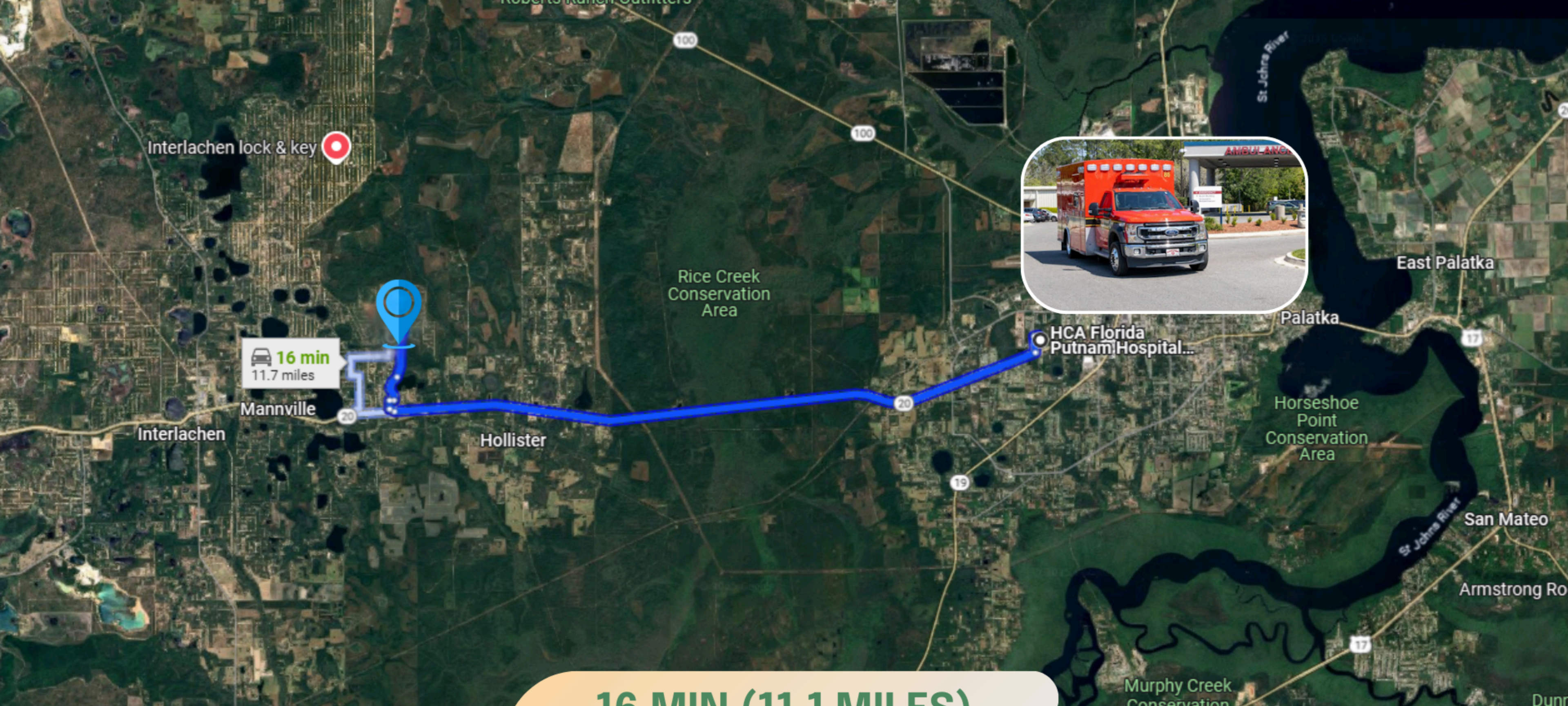
Snow:

Averages 0 inches of snow a year



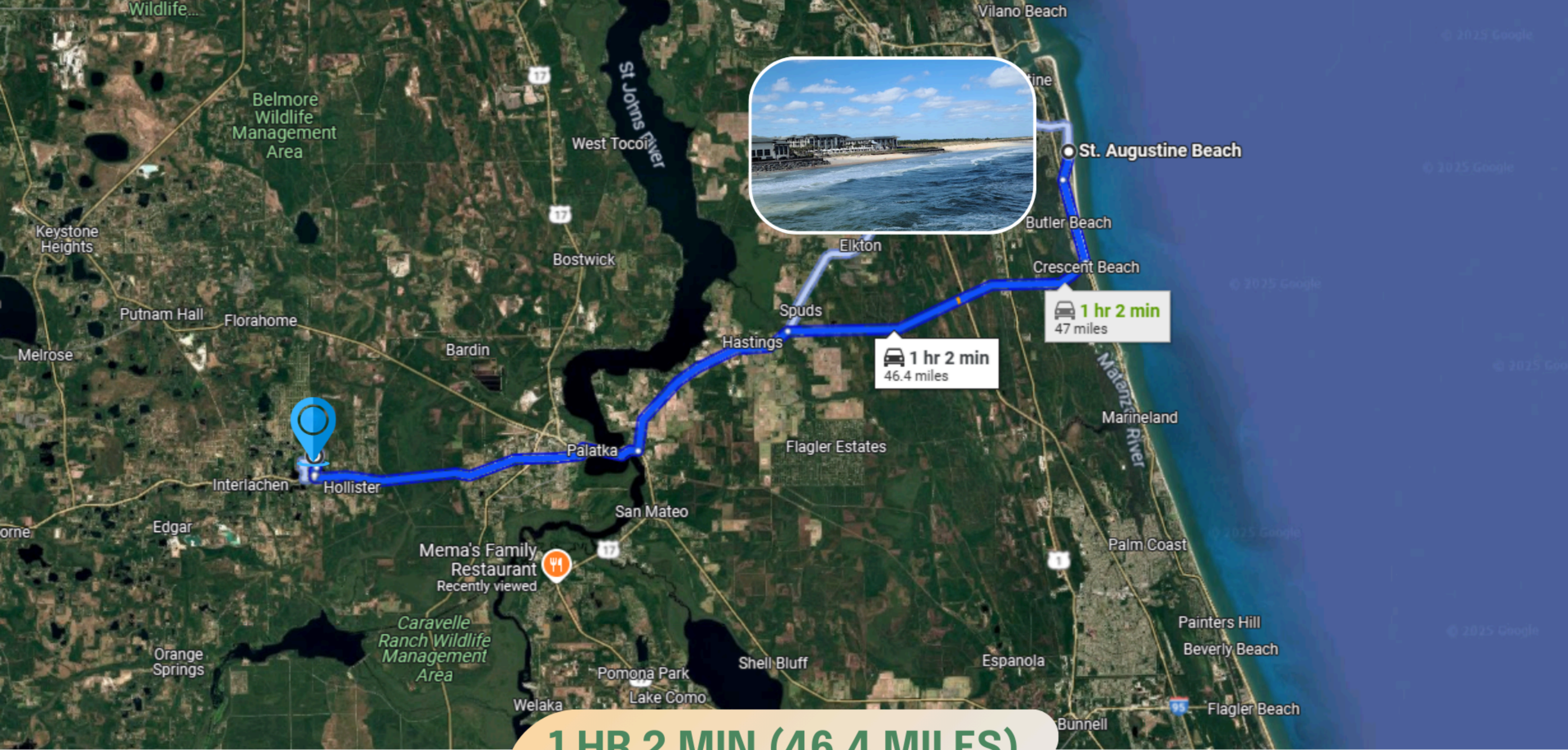
19 MIN (12.2 MILES)

THIS PROPERTY IS 19 MIN (12.2 MILES) TO WALMART SUPERCENTER IN PALATKA, FL.



16 MIN (11.1 MILES)

THIS PROPERTY IS 16 MIN (11.1 MILES) TO HCA FLORIDA PUTNAM HOSPITAL EMERGENCY ROOM IN PALATKA, FL.



THIS PROPERTY IS 1 HR 2 MIN (46.4 MILES) TO ST AUGUSTINE BEACH ON ANASTASIA ISLAND.

NEARBY AIRPORTS



Daytona Beach International Airport



Jacksonville International Airport

NEARBY LAKES



Lake Broward



Stella Lake



Crescent Lake

A photograph of two men shaking hands in a field at sunset. The man on the left is wearing a light-colored vest over a blue shirt and has a backpack. The man on the right is wearing a plaid shirt over a white t-shirt, glasses, and a watch, and is holding a tablet. The background is a field of yellow flowers under a warm, golden sky.

We pride ourselves in making sure the process is **simple, quick** and **stress-free** for you!

We offer **easy financing** as well as a **discounted cash price!**





VISIT US FOR MORE PROPERTY LISTINGS

Q <https://lifetimelandusa.com>



YOU MAY ALSO REACH US AT:

 682-382-9719

 sales@lifetimelandusa.com

 Lifetime Land USA

 lifetimeland_usa

*Our mission is to
turn your dream
of becoming a
landowner into
a reality.*