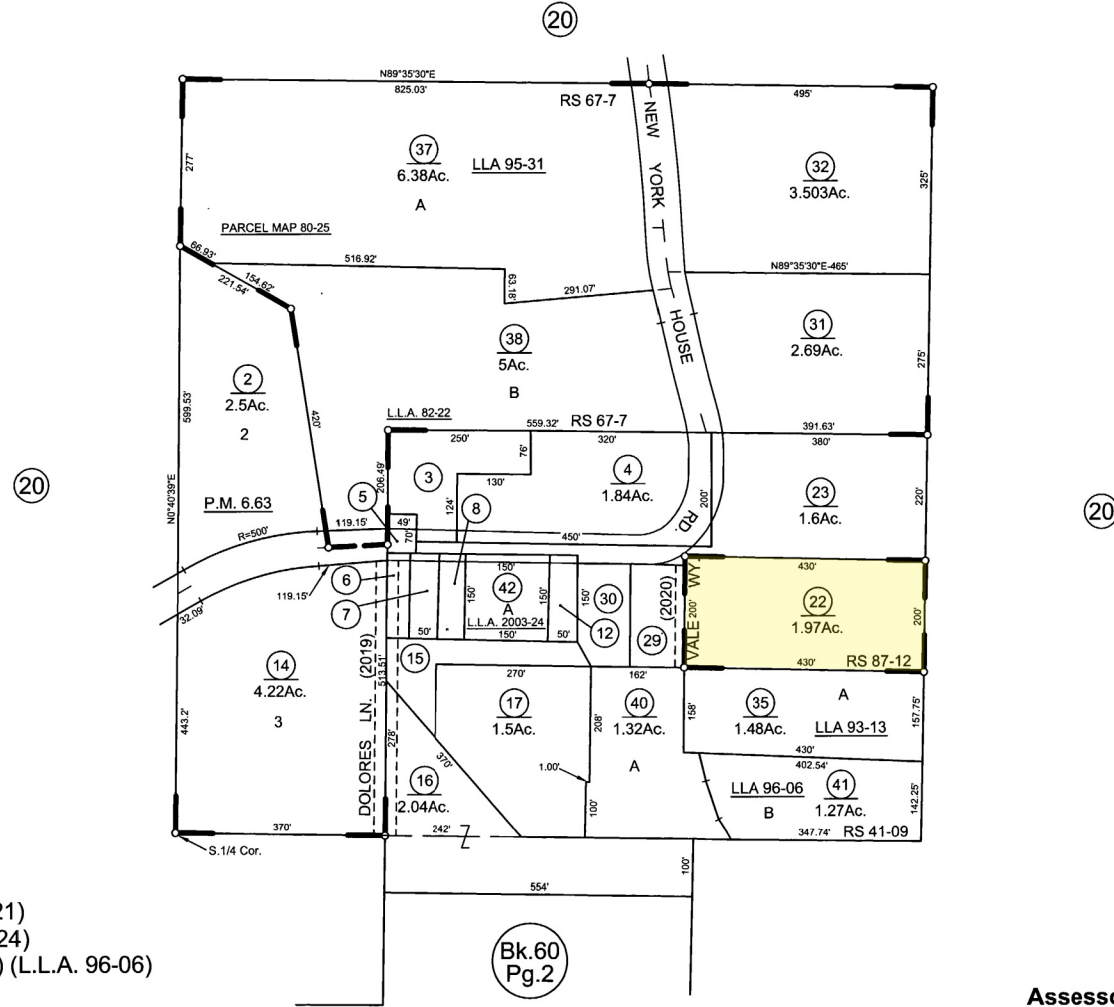


NOTE: This map was prepared for assessment purposes only, and is not intended to illustrate legal building sites or establish precedence over local ordinances. Official information concerning size or use of any parcel should be obtained from recorded documents and local governing agencies.

S.W. 1/4 OF S.E. 1/4 SEC. 36, T.19N., R.6E., M. D. B. & M.

Tax Area Code  
64-152

50-37



- R.S. - Bk. 87, Pg. 12 (R.O.S. 06-21)  
(L.L.A. 2003-24)
- R.S. - Bk. 67, Pg. 7 (L.L.A. 93-13) (L.L.A. 96-06)
- R.S. - Bk. 41, Pg. 9
- R.S. - Bk. 38, Pg. 36 (L.L.A 82-22) (L.L.A. 95-31)
- R.S. - Bk. 34, Pg. 12 (Parcel Map 80-25)
- R.S. - Bk. 22, Pg. 32 (Parcel Map 6.63)

Index - 3 Formerly 1-34, 2/78  
NOTE - Assessor's Block Numbers Shown in Ellipses  
Assessor's Parcel Numbers Shown in Circles

Assessor's Map Bk.50, Pg. 37  
County of Yuba, Calif.

08/07

SEP 24 2007