

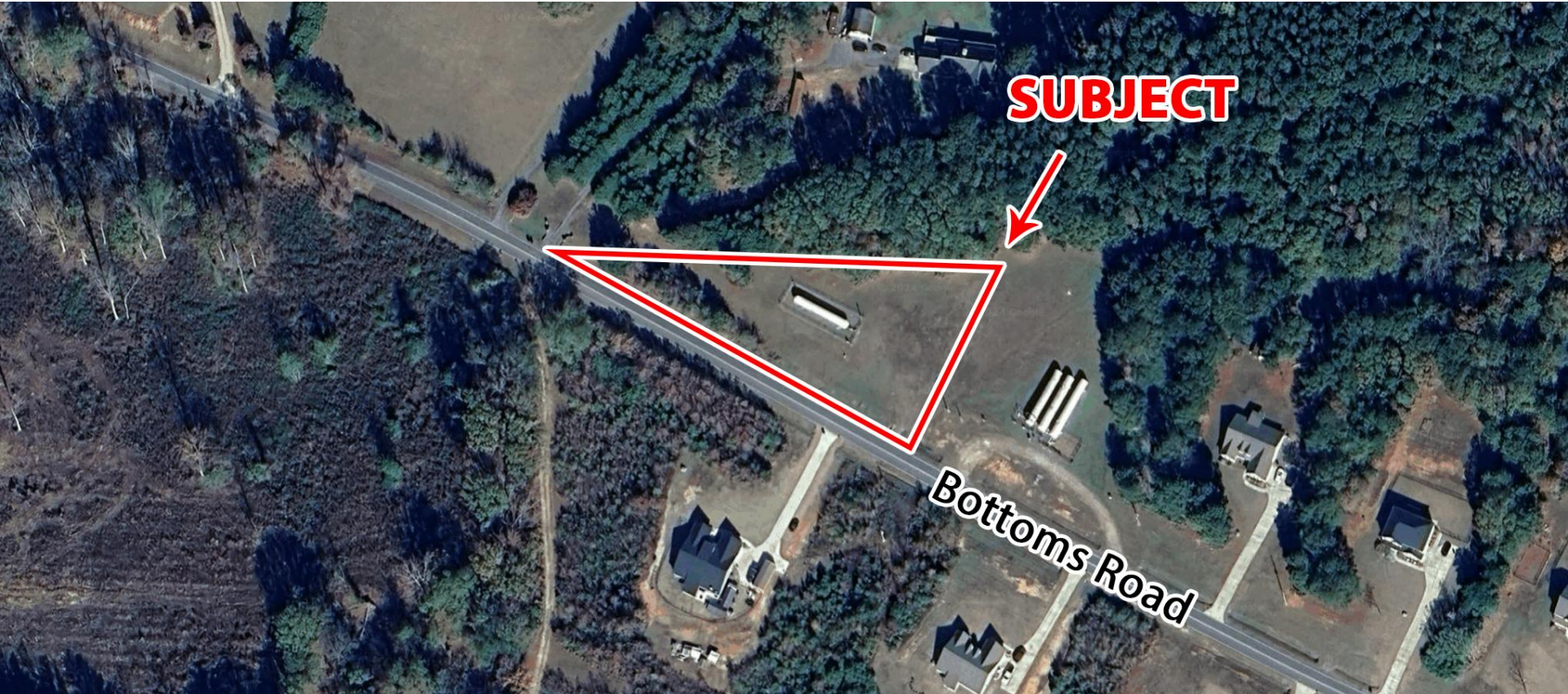
FOR SALE – 1 AC Commercial Lot
Bottoms Road
Concord, GA 30206



Summary

Area Info

Topo Map



SALE PRICE: \$28,500.00

CONTACT

Stephanie Griffin
478-746-9421 Office
239-322-4603 Cell
sgriffin@fickling.com



577 Mulberry St, Suite 1100
Macon, GA 31201
478.746.9421 Office
<https://commercial.fickling.com>

FOR SALE – 1 AC Commercial Lot

Bottoms Road
Concord, GA 30206



Summary

Area Info

Topo Map

PROPERTY INFORMATION

PROPERTY

Property Address: Bottoms Road
Concord, GA 30206

County: Pike

Utilities: N/A

Frontage: 408± ft on Bottoms Road

Topography: 80% Crop
20% Woodland

Taxes: Estimated \$342.35
(Unincorporated)

SITE

Site Size: 1 acre

Parcel ID: 042 026

Zoning: C-3

SALE PRICE: \$28,500.00

Demographics 2024	3 Miles	5 Miles	10 Miles
Population	1,960	7,313	27,042
Avg HH Income	\$105,157	\$109,008	\$129,446
Median Age	38.0	38.1	39.6

CONTACT

Stephanie Griffin
478-746-9421 Office
239-322-4603 Cell
sgriffin@fickling.com



577 Mulberry St, Suite 1100
Macon, GA 31201
478.746.9421 Office
<https://commercial.fickling.com>

This information is from resources deemed to be reliable and is subject to change without notice. No warranties or guarantees for accuracy are made by Fickling and Company.

FOR SALE – 1 AC Commercial Lot

Bottoms Road

Concord, GA 30206



Summary

Area Info

Topo Map

PROPERTY INFORMATION

NOTES

1 acre lot with commercial fence. Currently the lot houses a tank, tank will be removed prior to sale. Topography is 80% crop and 20% woodland with great frontage on Bottoms Road.

LOCATION

Lot is located in Pike County on Bottoms Road. Surrounding neighbors include Dollar General, Oskey Mechanical, USPS, Medowlark Airport, Ridgeview Farm Airport, Pike Depot Home & Hardware, and is only 5± miles way from the city of Zebulon.



CONTACT

Stephanie Griffin
478-746-9421 Office
239-322-4603 Cell
sgriffin@fickling.com



577 Mulberry St, Suite 1100
Macon, GA 31201
478.746.9421 Office
<https://commercial.fickling.com>

FOR SALE – 1 AC Commercial Lot

Bottoms Road

Concord, GA 30206

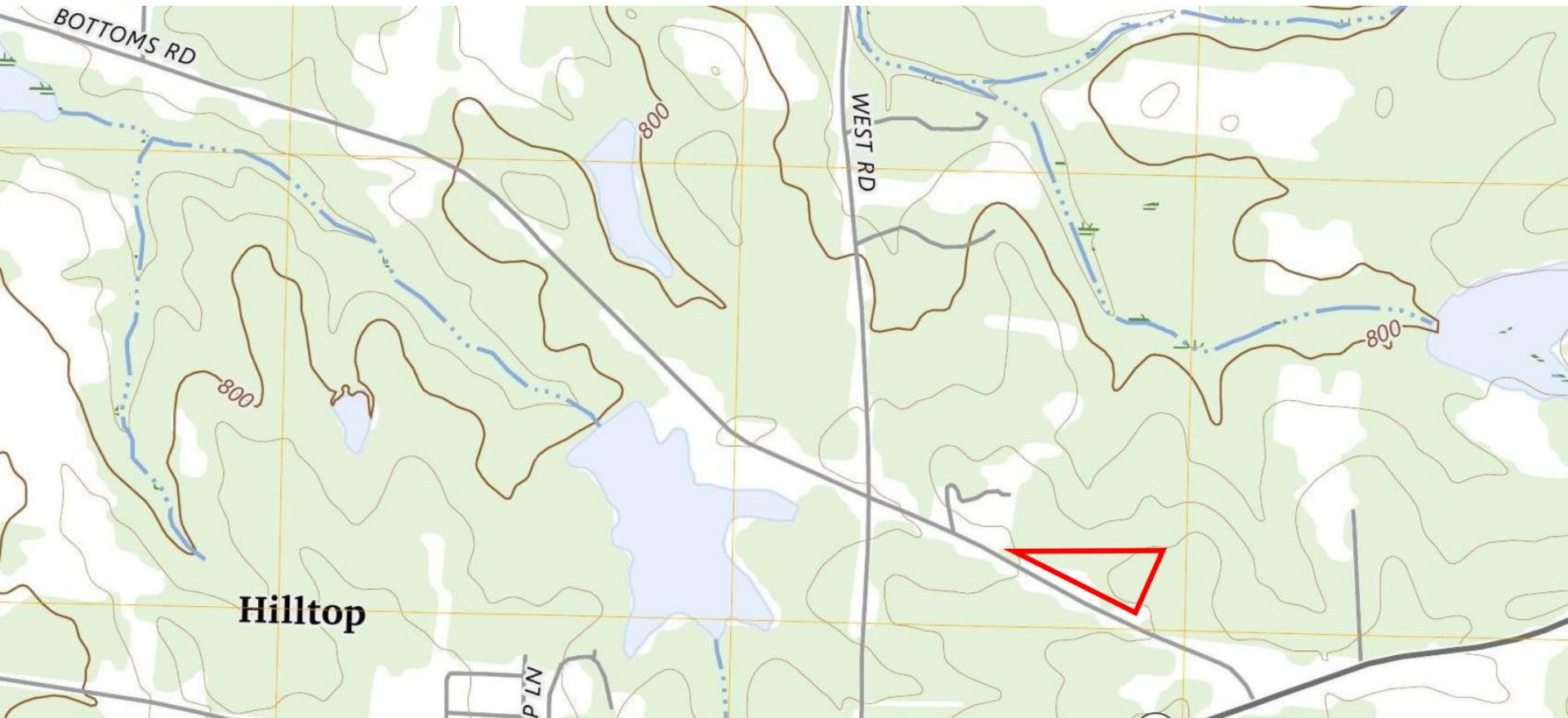


Summary

Area Info

Topo Map

TOPOGRAPHY MAP



CONTACT

Stephanie Griffin
478-746-9421 Office
239-322-4603 Cell
sgriffin@fickling.com



577 Mulberry St, Suite 1100
Macon, GA 31201
478.746.9421 Office
<https://commercial.fickling.com>