

13604 US Highway 64 W, Siler City 1717 sq.ft. | 4.360 acres

\$ 650,000

3 bedrooms/ 2 bathrooms



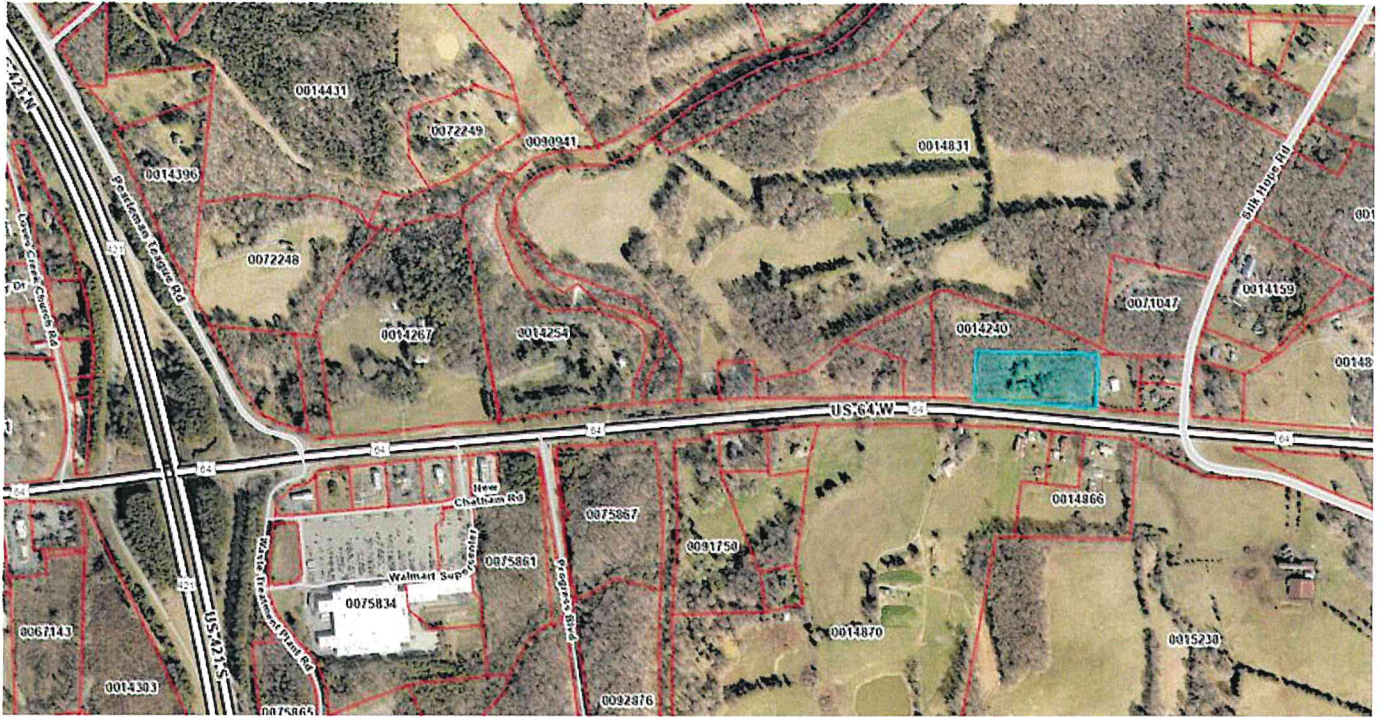
For Sale

Located just moments from the US Hwy 421/64 Intersection commercial district, this versatile property offers unlimited potential for a variety of uses. Situated on Highway 64, the land is highly accessible with high visibility, making it an ideal spot for both residential and commercial endeavors. As transitional land, it offers flexibility for future development or investment. If you're looking for a property with room for growth, this unrestricted gem provides the perfect canvas. With easy access to major roadways and neighboring businesses, you'll enjoy the benefits of both convenience and privacy. Don't miss out on this prime location. Entitlement contingency contract (rezoning) may be necessary. Convenient to Siler City, Pittsboro, Chatham Park, Disney, Toyota, and Wolfspeed.



Eric Andrews, ALC
(919) 542-0523
eric@ericandrewsrealtor.com

73 Hillsboro Street (P.O. Box 1400)
Pittsboro, NC 27312
Txt (919) 548-1014



Boundaries are Approximate