



Gilmer Oaks

158 Acres +/-
Yazoo County, MS

This 158-acre tract of hardwood timberland sits just one mile east of Yazoo City, Mississippi, along Mallory Drive. With convenient road frontage along the southern boundary, the property is easily accessible while still offering seclusion and privacy. The land is primarily covered in mature hardwoods—especially oak—mixed with scattered pine, creating a diverse timber stand. These trees are ready for harvest, offering a near-term opportunity for timber income and the chance to enhance wildlife habitat through selective thinning and regeneration cuts.

The topography varies, with rolling hills along the southern portion giving way to gentler slopes moving northward. This natural variation adds visual appeal and makes the property suitable for multiple uses, including hunting, trail development, or future cabin sites. The terrain, paired with the timber cover, makes the land highly attractive for recreational pursuits such as deer and turkey hunting.

Utilities are available along Mallory Drive, increasing the potential for development or a recreational retreat. The location is also a strong point—just one mile east of MS Highway 49 and only 1.5 miles north of MS Highway 16—making it easy to reach from nearby towns or even Jackson, which is under an hour away.

Whether you're looking for a private hunting property, a long-term timber investment, or a rural getaway site with future development potential, this property offers a rare mix of accessibility, income potential, and natural beauty in one of Yazoo County's most desirable rural areas.

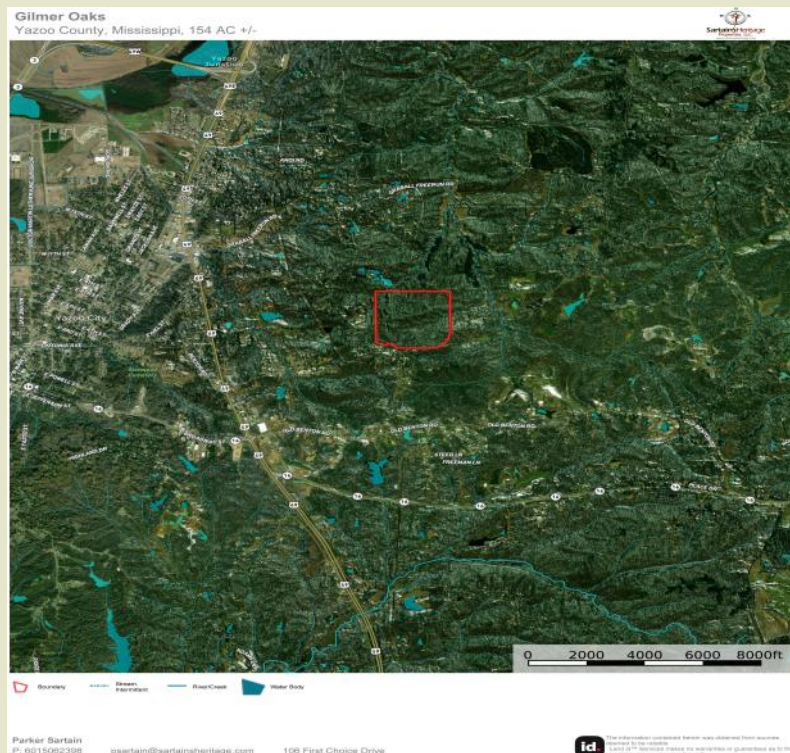
Offered at 632,000

[Coordinates: 32°51'05"N 90°21'56"W.](#)

[Map Link: Gilmer Oaks](#)

CONTACT:
JOE MALLARD
601-927-8222
Jmallard@sartainsheritage.com

Sartain's Heritage Properties
106 First Choice Drive
Madison, MS 39110
Phone: 601-856-2720
Fax: 601-853-6765
www.SartainsHeritage.com



Parker Sartain
P: 6015082398 psartain@sartainsheritage.com 106 First Choice Drive

The information contained herein was obtained from sources deemed reliable by the provider. No warranty is made as to the accuracy or completeness of the information.

