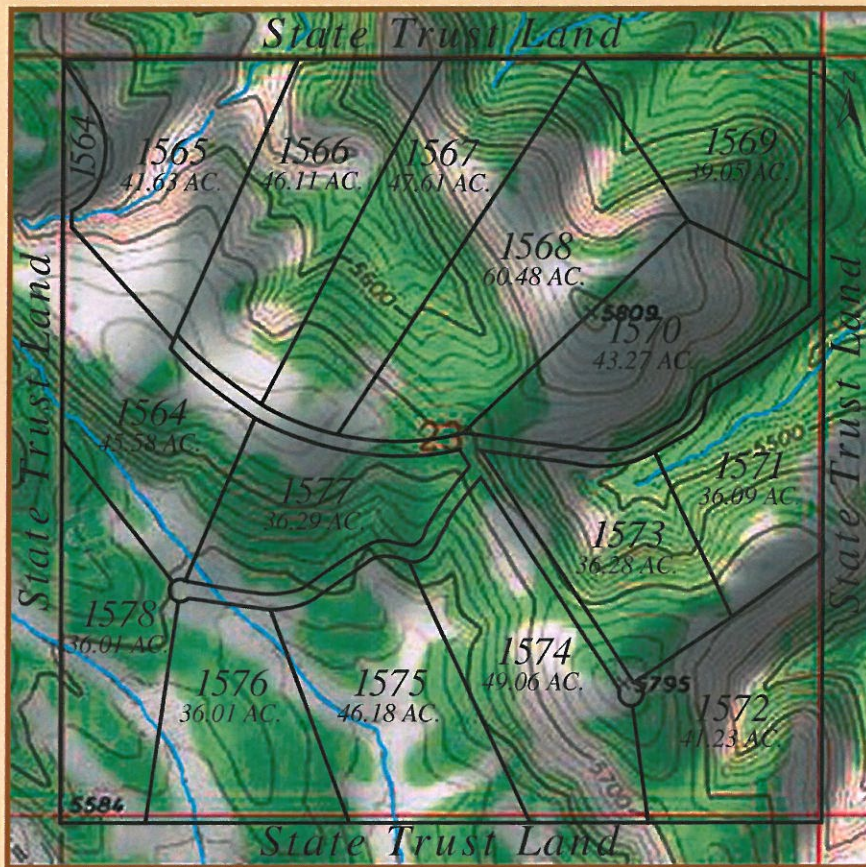


FINAL RELEASE

SIERRA VERDE RANCH Unit 36



Map not exactly to scale.

Location: Northwestern Arizona, near Seligman – 50 miles northwest of Prescott in Yavapai County.

General: Sierra Verde Ranch unit 36 is a varied selection of 36 to 60 acre properties situated amid the foothills and summits of the Juniper Mountains. The land is accented by heavily wooded hills and ridges that provide sweeping overlooks of the surrounding mountains. The land here is richly varied, offering a wide variety of terrains, landscapes and solar facings from which to choose. The contour mapping brings out some of this detail. The contour lines are at 20 foot intervals. The closer the spacing between the lines, the more dramatic the elevation changes become. Green shading indicates areas of evergreen woodlands, white illustrates open meadows carpeted with native grasses and wildflowers – blue indicates rain fed arroyos.

Elevation: The elevation ranges from 5,500 to 5,800 feet above sea level.

Terrain: Most unit 36 acreages within Sierra Verde Ranch are heavily forested with large stands of piñon pines and Rocky Mountain Junipers. Also available within select properties are portions of level to gently sloping meadows ideal for the grazing of horses or the planting of vegetable and fruit trees. Scenic ridgetop overlooks, beautiful rock formations, and lush seasonal water courses provide picturesque backdrops throughout.

Each property has been custom surveyed in concert with these natural features. The result is an outstanding selection of building sites within each parcel.

Special Features: Select unit 36 properties border State of Arizona Trust Lands. These expansive 640 acre tracts with their beautiful woodlands and meadows are within a State Trust and provide a quiet scenic backdrop for ranch owners.

Each Sierra Verde Ranch property has been professionally surveyed and all corners are clearly marked for easy identification.

Parcel prices include maintained access roads along County recorded easements along with horse and livestock privileges. Intelligent community covenants assure tasteful use/development and preservation of the fine wilderness environment.

FIRST UNITED REALTY, INC.

Arizona's Largest Provider of Private Land

www.arizonaland.com

1-800-966-6690

Prices and parcel availability subject to change without notice.