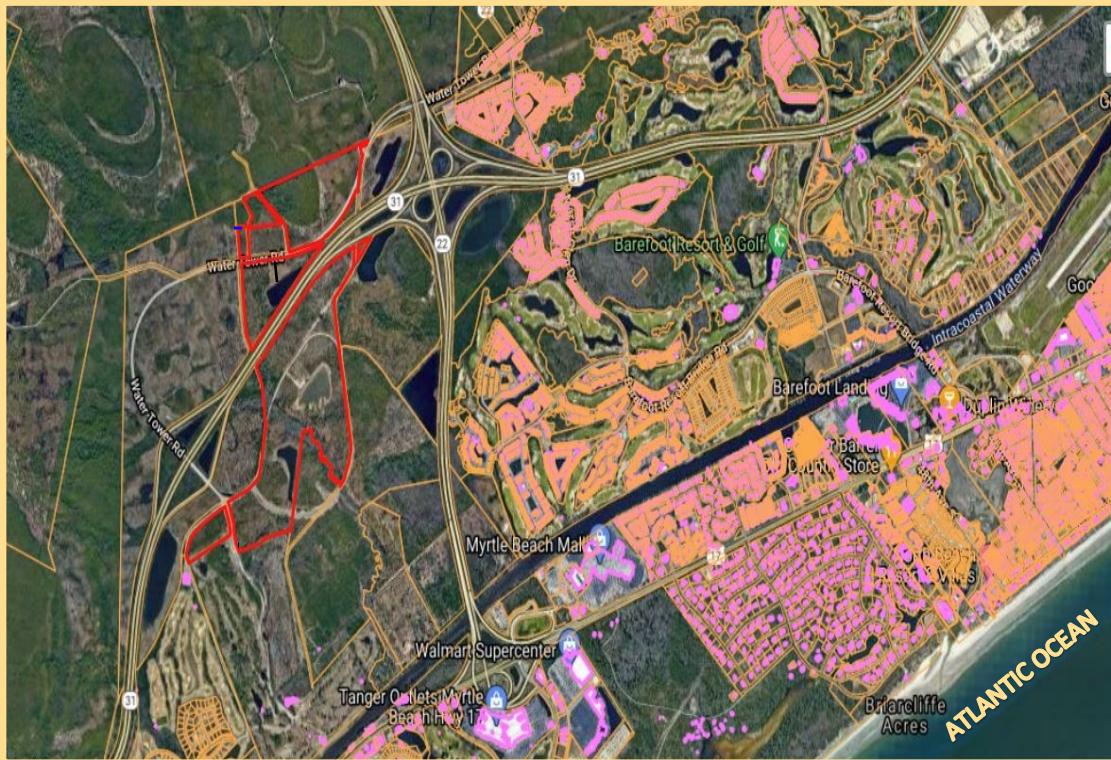




Commercial Real Estate

Apache Properties



ACREAGE AVAILABLE

ZONING:
COMMERCIAL,
DISTRIBUTION,
SINGLE FAMILY RESIDENTIAL,
&
MULTI-FAMILY RESIDENTIAL

Location:
Highway 31
&
Water Tower Road
North Myrtle Beach, SC

**ALL REMAINING
ACREAGE FOR
COMMERCIAL
USE ONLY**

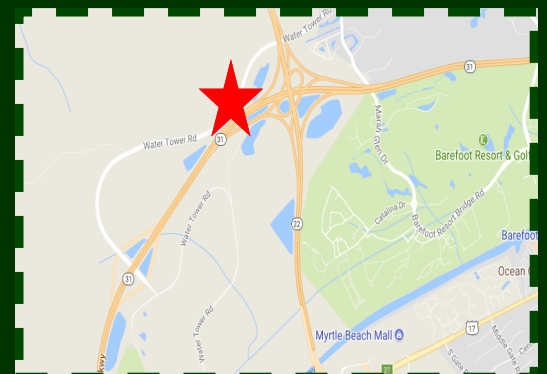
- Three major tenants that have recently located to our property are PepsiCo, Amazon, and UPS.
- Close proximity to Barefoot Resort Developments.
- Less than 4 miles to the beautiful beaches of North Myrtle Beach.
- Less than 5 miles to shopping with Tanger Outlets, Colonial Mall, and Arcadian Shores Commons. Along with many restaurants located on Restaurant Row.
- Horry County TMS# 155-00-01-054 PIN# 38900000003
Horry County TMS# 155-00-01-054 PIN# 38900000234

Please Call Agent for Pricing

Contact Us At:

Phone: 843-449-0441

E-Mail: info@wacclt.com

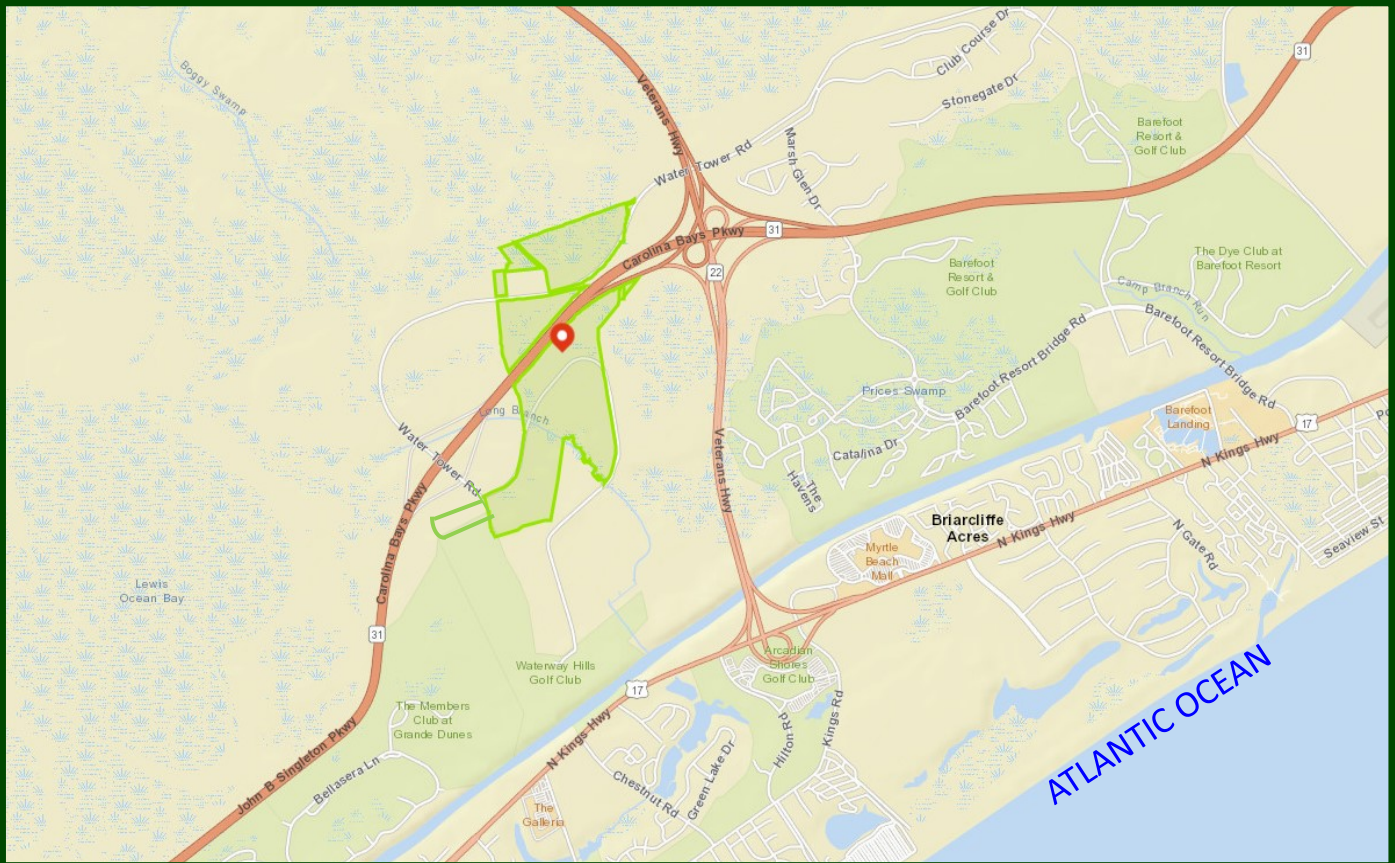
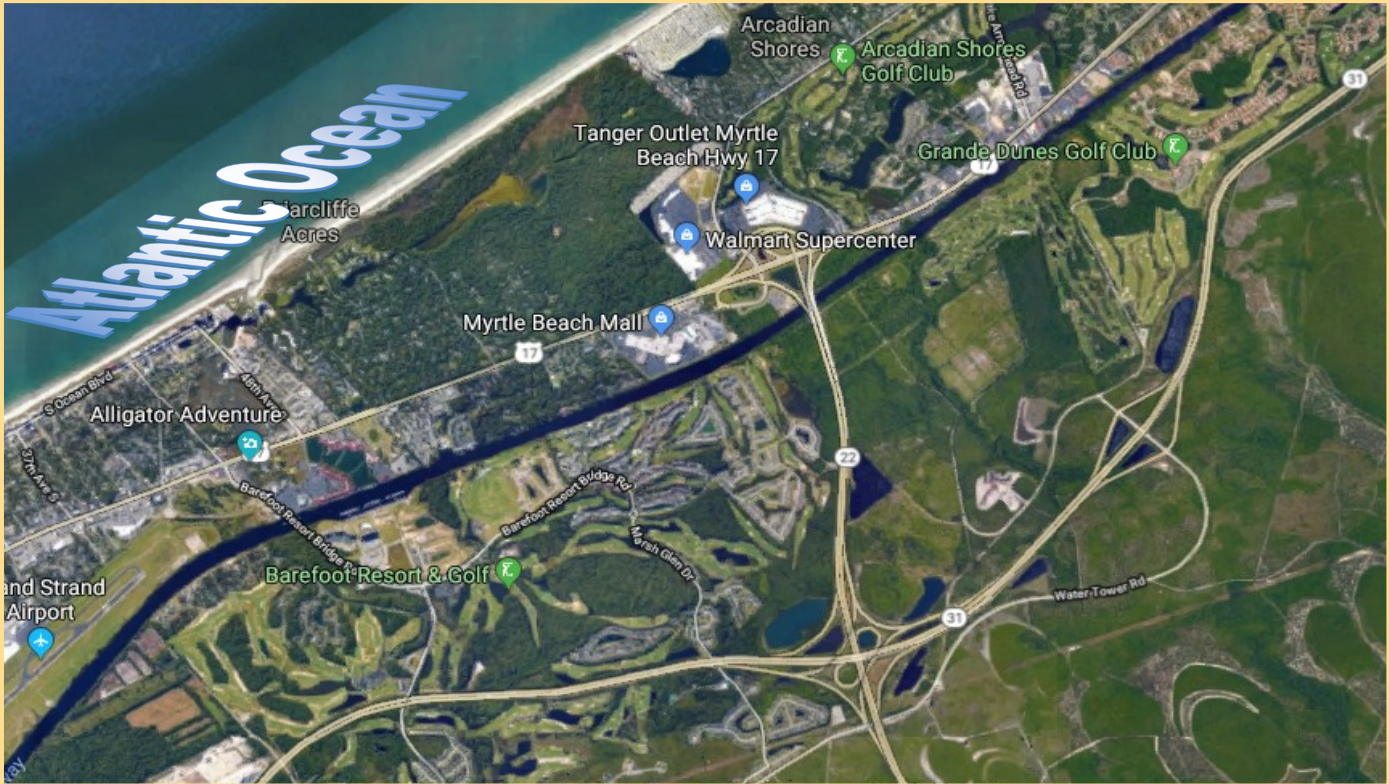


APACHE TRACT



PIN #3890000003 & PIN #38900000234

APACHE TRACT

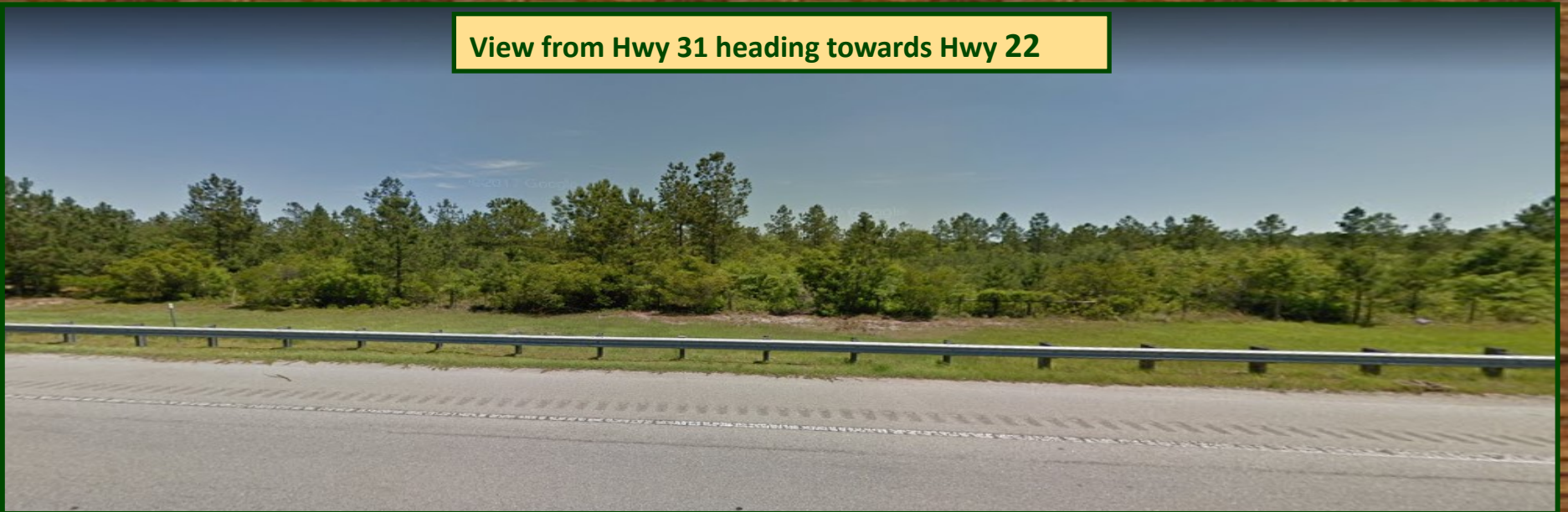


APACHE TRACT

View from Water Tower Road



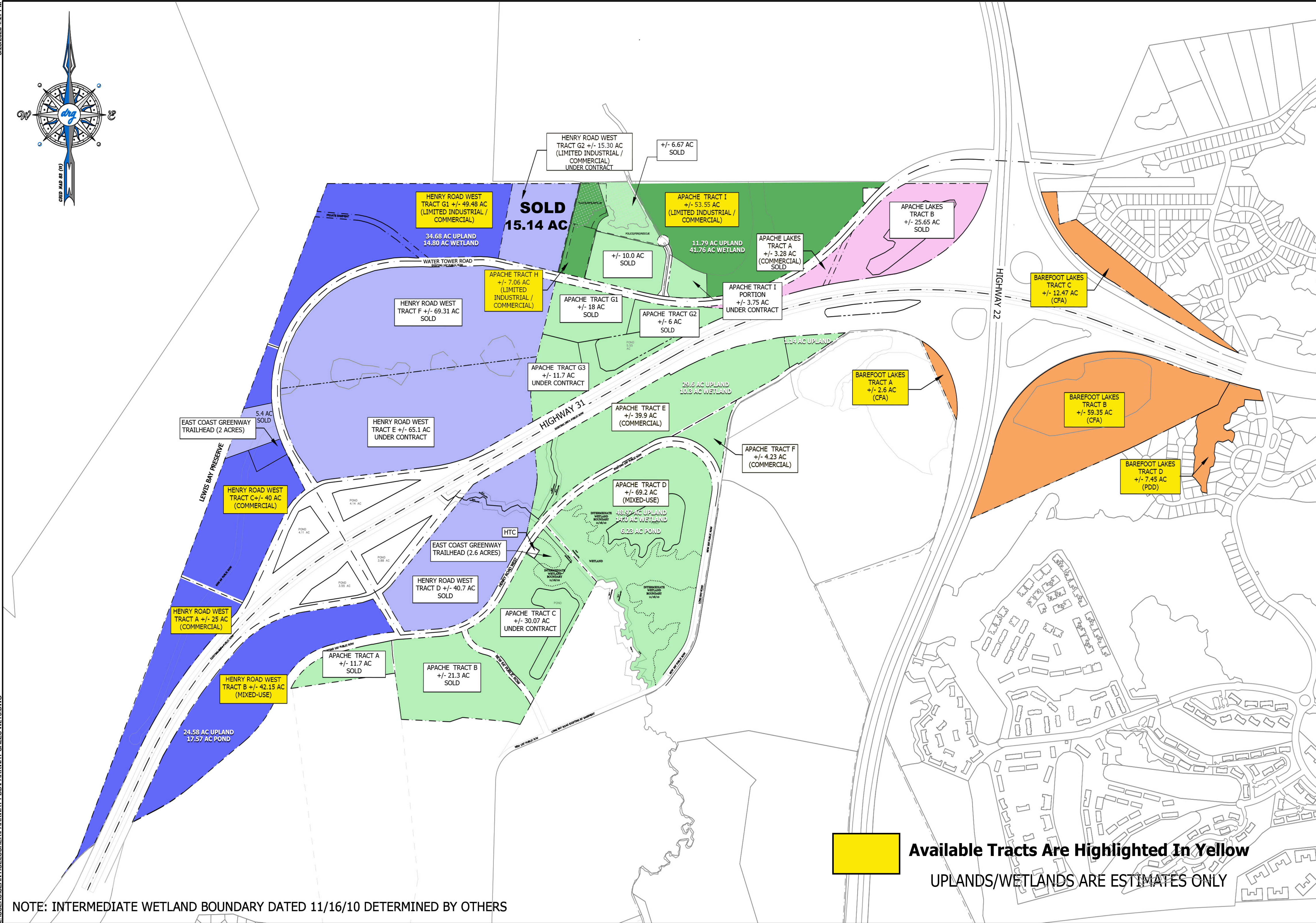
View from Hwy 31 heading towards Hwy 22



9/26/2024 4:21 PM
L:\USERS\SEAN.HOELSCHER\PROJECTS\DRG\SALES\WLT3.DWG

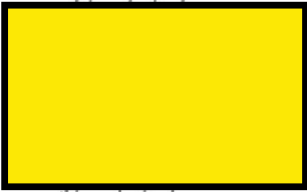


DEVELOPMENT RESOURCE GROUP, LLC
4703 CLEANDER DRIVE
MYRTLE BEACH, SC 29577
843-839-3360 | DRGPLLC.COM



PARKWAY PARCELS

JOB NO:	
SCALE:	1"=500'
DRAWN BY:	SCH
CHECKED BY:	SCH
DATE:	6/12/24
EXHIBIT NUMBER:	



Available Tracts Are Highlighted In Yellow
UPLANDS/WETLANDS ARE ESTIMATES ONLY

NOTE: INTERMEDIATE WETLAND BOUNDARY DATED 11/16/10 DETERMINED BY OTHERS